



W I N - 6 3 - 0 0 8 6

[illegible]

USER'S MANUAL

HF-W2000 Model 35/30

SETUP GUIDE

- **Read safety instructions carefully and understand them before starting your operation.**
- **Keep this manual at hand for reference.**

USER'S MANUAL

First Edition, December 2011, WIN-63-0086 (out of print)
Second Edition, March 2012, WIN-63-0086-01 (out of print)
Third Edition, June 2012, WIN-63-0086-02 (out of print)
Fourth Edition, June 2013, WIN-63-0086-03 (out of print)
Fifth Edition, April 2015, WIN-63-0086-04

All Rights Reserved, Copyright © 2011, 2015, Hitachi Industry & Control Solutions, Ltd.

The contents of this publication may be revised without prior notice.

No part of this publication may be reproduced in any form or by any means without permission in writing from the publisher.

Printed in Japan.

TP<IC> (FL-MW2007)



SAFETY SUMMARY

Before using this device, read the following safety precautions carefully to understand them.

- Follow the instructions and procedures in this manual during operation.
- Take particular care to adhere to safety-related precautions indicated on the device and in this manual. Failure to do so may result in personal harm or cause damage to the device.
- The safety-related precautions are described after the headers as shown below. They consist of a safety warning symbol and a header word of “DANGER”, “WARNING”, “CAUTION”, or “NOTICE”.



This is a safety warning symbol. It is used to call attention to potential dangers that could cause bodily harm. To avoid injury or death, follow the safety-related instruction that follows this symbol.



DANGER: Indicates the existence of dangers likely to cause death or significant injury.



WARNING: Indicates the existence of dangers that have the potential to cause death or significant injury.



CAUTION: Indicates the existence of dangers that have the potential to cause light or moderate injury.

NOTICE: Indicates the existence of dangers that may cause damage other than bodily harm.

Note that the “NOTE” header is used to indicate precautions about device handling and operation.

- Do not perform any operations not included in this manual. If a problem occurs with the device, contact maintenance personnel.
- Before using this device, read the safety precautions in this manual carefully to understand them.
- Keep this manual close at hand for easy reference.
- The precautions indicated on the device and in this manual have been given much consideration, but unforeseen cases may still occur. During operation, exercise personal caution in addition to following instructions.



SAFETY SUMMARY (Continued)

1. GENERAL PRECAUTIONS

Read the following safety precautions carefully to understand them.

1.1 WARNING

- This device was not designed for use with systems with requirements directly connected to human safety. Contact our sales staff if such usage may occur.
- In the unlikely event that use of this device causes smoke or strange odors, turn it off, unplug it, and contact sales staff or maintenance personnel. Continued use could result in fire or electric shock.
- Since this device contains a magnetic disk, take care not to jolt, shock, or shake it. In the unlikely event that this device is dropped or its case is damaged, unplug it and then contact maintenance personnel. Continued use could result in fire or electric shock. Likewise, avoid any shock during unpackaging and transport, as these can cause malfunctions.
- Do not physically alter this device, as it could result in fire or electric shock. Keep in mind that we take no responsibility for damage caused as a result of such alteration.
- To mitigate unlikely device malfunctions or faults due to failure or misuse, provide external protection and safety circuits, and design your system by taking care to implement protective measures against personal injury or disaster.



SAFETY SUMMARY (Continued)

1.2 CAUTION

- Always leave space in front of and in back of this device for air circulation openings and for maintenance operation. Failure to do so can lead to high temperatures, causing damage or decreasing lifespan.
- This device may cause personal injury if it falls or tips over. Make sure that this device is appropriately fastened when carrying it.
- Keep take care to prevent your fingers from being caught or snapped in this device when unpacking or carrying it.



SAFETY SUMMARY (Continued)

1.3 NOTICE

- This device cannot guarantee system safety by itself. To mitigate unlikely device malfunctions or faults due to failure or misuse, design your system by taking care to implement protective measures against personal injury or disaster, such as external protection and safety circuits.
- Use the basic software that we specify. Operation is not guaranteed if any other basic software is used.
- Avoid using this device in dusty areas or environments with corrosive gases, as this may lead to failure.
- When emergency cutoff is performed (the power cable is unplugged or the breaker is cut without performing OS shutdown processing), the system program may require reloading due to loss of journal information, depending on the processing program. As such, do not perform emergency cutoff unless absolutely necessary due to malfunction.
- Keep in mind that if the power supply is cut, the system may not be able to recover automatically.
- Once disk access is complete, eject the disk from the DVD drive.
Leaving it in the DVD drive may result in failure.
- Leaving the disk tray open may result in failure.
Make sure that the disk tray is closed when not in use.



SAFETY SUMMARY (Continued)

2. WARNINGS IN THIS MANUAL

2.1 “NOTICE” Indication

- This device may lose important files depending on the type of failure. Files may also be lost due to factors other than device failure, including misuse or power outages during use. In such cases, these files cannot be recovered. To protect against such situations, incorporate file saving into daily operation, and back up files regularly.

(See page i)

- The recovery DVD contains an image file created from the factory-set hardware configuration. As such, if the hardware configuration differs from the factory settings, the operating system may not run normally even when restoration is performed. For restoration using the recovery DVD, remove all external memory devices, and then use the factory-set hardware configuration.

Likewise, since using the recovery DVD will delete all data on the system drive, perform backup beforehand as necessary.

(See page 3-2)

This Page Intentionally Left Blank

PREFACE

This manual describes the OS setup procedures for Hitachi FA Computers HF-W2000 model 35/30, aimed at the following pre-installed operating systems.

- Windows® XP Professional
- Windows® 7 Professional

<Manual organization>

This manual consists of the following:

CHAPTER 1 SETUP PROCEDURES FOR INITIAL POWER-ON

CHAPTER 2 BASIC SETTINGS AFTER OS SETUP

CHAPTER 3 USING THE RECOVERY DVD TO RESTORE FACTORY SETTINGS

CHAPTER 4 PRECAUTIONS

APPENDIX A SETUP PROCEDURES FOR INSTALLING Windows XP Mode (FOR Windows® 7 ONLY)

<Terms used in this manual>

The terms used in this manual are defined as follows.

Setup: Performing environment settings to allow software to be used on a computer.

Installation: Moving software from a DVD, CD, or floppy disks to a computer's hard disk.

Virtual machine: A virtual hardware environment provided by Virtual PC.

Guest OS: An operating system running on a virtual machine.

NOTICE

This device may lose important files depending on the type of failure. Files may also be lost due to factors other than device failure, including misuse or power outages during use. In such cases, these files cannot be recovered. To protect against such situations, incorporate file saving into daily operation, and back up files regularly.

<Note for storage capacity calculations>

- Memory capacities and requirements, file sizes and storage requirements, etc. must be calculated according to the formula 2^n . The following examples show the results of such calculations by 2^n (to the right of the equals signs).

1 KB (kilobyte) = 1,024 bytes

1 MB (megabyte) = 1,048,576 bytes

1 GB (gigabyte) = 1,073,741,824 bytes

- As for disk capacities, they must be calculated using the formula 10^n . Listed below are the results of calculating the above example capacities using 10^n in place of 2^n .

1 KB (kilobyte) = 1,000 bytes


1 MB (megabyte) = 1,000² bytes

1 GB (gigabyte) = 1,000³ bytes

<Trademarks>

- Microsoft®, Windows®, and Internet Explorer® are trademarks or registered trademarks of Microsoft Corporation in the United States and other countries.
- Other company or product (software or hardware) names used in this manual other than those above are trademarks, registered trademarks, or products of their respective companies.

CONTENTS

 SAFETY SUMMARY	S-1
CHAPTER 1 SETUP PROCEDURES FOR INITIAL POWER-ON	1-1
1.1 Windows® XP Setup	1-1
1.1.1 Setup preparations	1-1
1.1.2 Windows® XP Professional setup procedures	1-2
1.2 Windows® 7 Setup	1-4
1.2.1 Setup preparations	1-4
1.2.2 Windows® 7 Professional setup procedures	1-4
CHAPTER 2 BASIC SETTINGS AFTER OS SETUP	2-1
2.1 Windows® XP Basic Settings	2-1
2.1.1 Overview of basic settings procedures	2-1
2.1.2 Screen settings	2-2
2.1.3 Network environment settings	2-3
2.1.4 DVD drive settings (for DVD multi-drive implementations)	2-5
2.1.5 Hard disk free space formatting	2-7
2.2 Windows® 7 Basic Settings	2-11
2.2.1 Overview of basic settings procedures	2-11
2.2.2 Screen settings	2-12
2.2.3 Automatic update settings	2-13
2.2.4 Network environment settings	2-15
2.2.5 Formatting hard disk free space	2-17
CHAPTER 3 USING THE RECOVERY DVD TO RESTORE FACTORY SETTINGS	3-1
3.1 Overview of Recovery Procedures	3-1
3.2 Preparations	3-2
3.3 Restoring a System Drive to Factory Settings	3-3
CHAPTER 4 PRECAUTIONS	4-1
4.1 Event Logging During Setup of Windows® 7	4-1
4.2 Event Logging While Windows® 7 Is Running	4-1
4.3 Precautions Regarding the Windows® 7 Command Prompt	4-1
4.4 Default Scheduled Functionality of Windows® 7	4-2
4.5 Precautions Regarding Security Enhancement Functionality	4-3
4.6 Entering the Search Location When Adding Components (for Windows® XP Only)	4-16
4.7 HITACHI Directory (for Windows® XP Only)	4-16
4.8 Notes on the File Sharing for Windows® 7	4-17
APPENDIX A SETUP PROCEDURES FOR INSTALLING Windows XP Mode (FOR Windows® 7 ONLY)	A-1

This Page Intentionally Left Blank

CHAPTER 1 SETUP PROCEDURES FOR INITIAL POWER-ON

This chapter explains the following setup procedures.

- Setup procedures for initial power-on after HF-W purchase.

Pre-installed OS	Description
Windows® XP Professional	Perform setup as shown in “1.1 Windows® XP Setup.”
Windows® 7 Professional	Perform setup as shown in “1.2 Windows® 7 Setup.”

1.1 Windows® XP Setup

This section shows the setup procedures for a pre-installed Windows® XP Professional.

- This sets the basic items for Windows® XP Professional.
- RAS functionality is set up automatically.
- The required time is roughly 10 minutes.

1.1.1 Setup preparations

The items required during setup are as follows. Make sure that they are determined and checked before setup is performed.

Item	Description
Name	Name of the license contractor. • This is the name of the user registering the license, and cannot be changed after being set.
Organization name	Name of the organization to which license contractor belongs. • This is the name of the organization registering the license, and cannot be changed after being set.
License certificate	Make sure that the license certificate is affixed to the HF-W unit.
Computer name	A name for identifying the computer on the network. • This is a name for identifying a computer in the network. Use a network-specific name. This can be changed after being set.
Workgroup name	A name for groups comprised of multiple machines. (The default of “WORKGROUP” can be used if no change is needed.) This can be changed after being set.
Administrator password	The administrator password. This can be changed after being set.

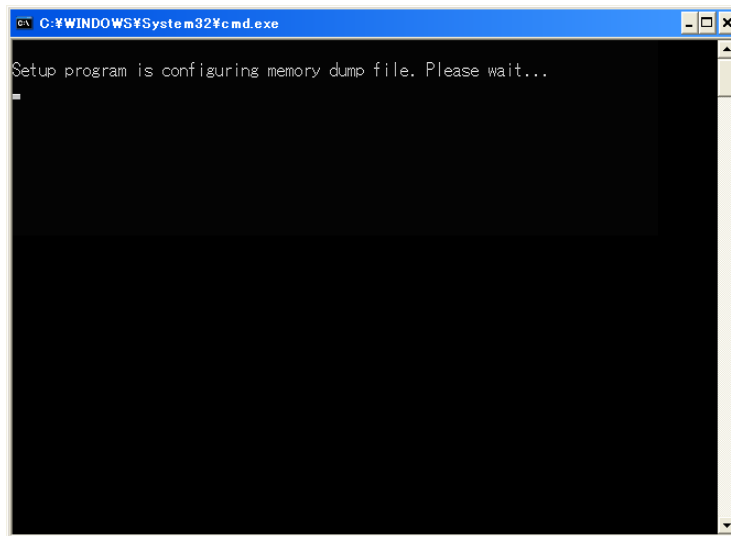
1. SETUP PROCEDURES FOR INITIAL POWER-ON

1.1.2 Windows® XP Professional setup procedures

Perform the following to set up Windows® XP Professional.

1. Turn the computer power on.
The Windows® XP setup screen is displayed, followed shortly by the start screen of the Windows® XP setup wizard.
 - Click the **[Next] button**.
2. The Regional and Language Options screen is displayed.
 - If there are no particular customizations to be performed, leave the screen as is and click the **[Next] button**.
3. The Personalize Your Software screen is displayed. The name and organization name specified here cannot be changed, so confirm them ahead of time.
 - Enter the name and organization name, and click the **[Next] button**.
4. The Computer Name and Administrator Password screen is displayed.
 - For the computer name, enter a specific name for identifying the computer on the connected network.
 - Enter the administrator password.
 - Click the **[Next] button**.
5. The Date and Time Settings screen is displayed.
 - Set the date and time, and click the **[Next] button**.
6. The Networking Settings screen is displayed.
 - Select **“Typical settings”**, and click the **[Next] button**.
 - The Workgroup or Computer Domain screen is displayed. Select **“No, this computer is not on a network, or is on a network without a domain”**, and enter the workgroup name (The default of “WORKGROUP” can be left as is if no change is needed), and click the **[Next] button**.

7. The “Setup program is configuring memory dump file. Please wait...” message is displayed, indicating that the memory dump area is being secured. This processing may take several minutes, so wait until screen is closed.



Once this is complete, restart is performed automatically, so log in as an administrator.

This completes Windows® XP Professional setup. Follow the procedures in “CHAPTER 2 BASIC SETTINGS AFTER OS SETUP” to perform basic OS settings.

NOTE

To perform reliable failure analysis, this device is set up to collect a complete memory dump when a system error (blue screen) occurs. This setting takes effect after system restart.

1. SETUP PROCEDURES FOR INITIAL POWER-ON

1.2 Windows® 7 Setup

This section shows the setup procedures for a pre-installed Windows® 7 Professional.

- This sets the basic items for Windows® 7 Professional.
- RAS functionality is set up automatically.
- The required time is roughly 15 minutes.

1.2.1 Setup preparations

The items required during setup are as follows. Make sure that they are determined and checked before setup is performed.

Item	Description
License certificate	Make sure that the license certificate is affixed to the HF-W unit.
User name	The user name of the administrator account for the computer. This can be changed after being set.
Password	The password for the user name. This can be changed after being set.
Computer name	A name for identifying the computer on the network. <ul style="list-style-type: none">• This is a name for identifying a computer in the network. Use a network-specific name. This can be changed after being set.

1.2.2 Windows® 7 Professional setup procedures

Perform the following to set up Windows® 7 Professional.

1. Turn the computer power on.
The “Starting services.” message is displayed, and then restart is performed automatically.
Shortly after restart, the Windows® 7 Professional setup screen is displayed.
2. The user name input screen is displayed.
 - Enter the user name and the computer name, and click the **[Next] button**.
3. The password input screen is displayed.
 - Enter the password in **[Type a password (recommended)] field** and **[Retype your password] field**.
 - Enter the password hint in **[Type a password hint] field**.
 - Click the **[Next] button**.
4. The license terms screen is displayed.
 - Check the contents displayed, and select the **“I accept the license terms” checkbox**.
 - Click the **[Next] button**.
5. The screen for setting automatic Windows protection is displayed.
 - Click the **[Ask me later] button**.
6. The time and date settings screen is displayed.
 - Set the timezone, date, and time.
 - Click the **[Next] button**.
7. Once setup is complete, login is performed automatically.

This completes Windows® 7 Professional setup. Follow the procedures in “CHAPTER 2 BASIC SETTINGS AFTER OS SETUP” to perform basic OS settings.

NOTE

To perform reliable failure analysis, this device is set up to collect a complete memory dump when a system error (blue screen) occurs. This setting takes effect after system restart.

CHAPTER 2 BASIC SETTINGS AFTER OS SETUP

This chapter explains the following settings procedures.

- Basic settings procedures after OS setup

Perform these procedures as needed after OS setup.

Pre-installed OS	Description
Windows® XP Professional	See “2.1 Windows® XP Basic Settings” and perform each appropriate setting.
Windows® 7 Professional	See “2.2 Windows® 7 Basic Settings” and perform each appropriate setting.

2.1 Windows® XP Basic Settings

This section shows the basic settings procedures for pre-installed Windows® XP Professional. Perform these procedures as needed after OS setup.

2.1.1 Overview of basic settings procedures

Screen settings



- See “2.1.2 Screen settings.”
- Set the screen resolution and screen colors.
 - The required time is roughly 3 minutes.

Network environment settings



- See “2.1.3 Network environment settings.”
- The required time is roughly 10 minutes.

DVD drive settings (for DVD multi-drive implementations)



- See “2.1.4 DVD drive settings (for DVD multi-drive implementations).”
- These settings are performed only for DVD multi-drive implementations.
 - The DVD drive settings are changed to allow writing to DVD-RAM.
 - The required time is roughly 3 minutes.

Hard disk formatting

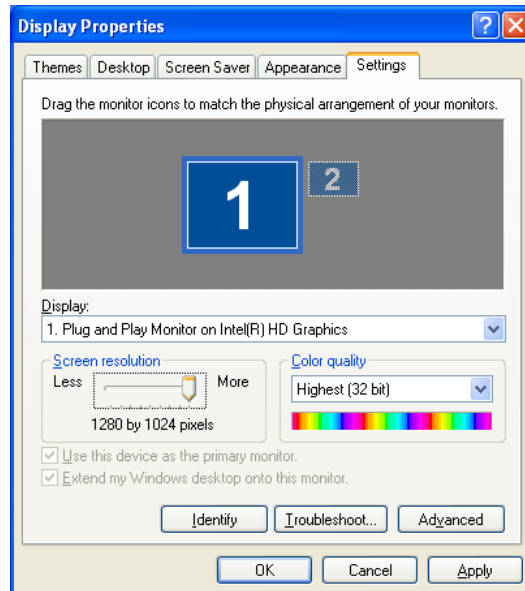


- See “2.1.5 Hard disk free space formatting.”
- The formatting time differs depending on the size of the partition to be formatted.

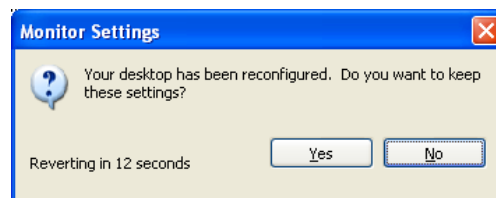
2. BASIC SETTINGS AFTER OS SETUP

2.1.2 Screen settings

1. Log on as a computer administrator if not already logged on as such.
2. On the desktop, right-click to display the pop-up menu, and click **[Properties]**.
3. The **[Display Properties] window** is displayed. Click the **[Settings] tab**.
4. Set the Screen resolution and Color quality as needed, and click the **[OK] button**.



5. The **[Monitor Settings] window** is displayed. To save these settings, click the **[Yes] button**. Otherwise, click the **[No] button** and perform settings again.



2.1.3 Network environment settings

The local area network settings have DHCP set to be used by default (“**Obtain an IP address automatically**”). To set an IP address without using DHCP, perform the following procedures.

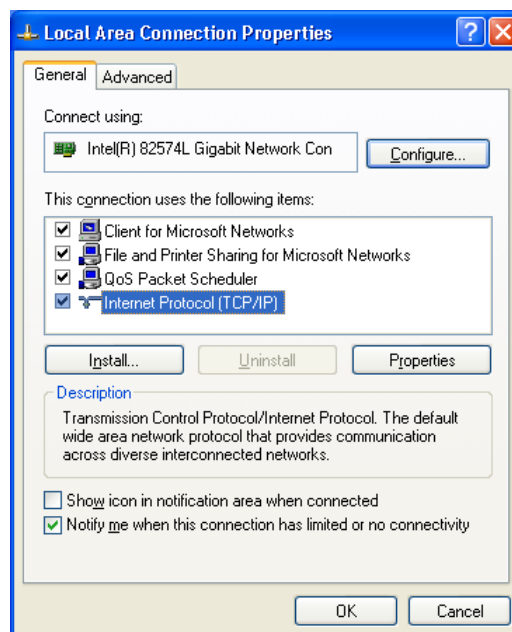
1. Log on as a computer administrator if not already logged on as such.
2. Click the **[Start]** button, and choose **[All programs]**, **[Accessories]**, **[Communication]**, and then **[Network connections]**.
3. The **[Network Connections]** window is displayed.
4. Double-click the **[Local Area Connection]** icon.

NOTE

If there are many **[Local Area Connection]** icons, perform the following procedures to link the icon and Ethernet adapter port.

- Right-click the **[Local Area Connection]** icon, and choose **[Properties]** from the displayed pop-up menu.
- Click the **[Configure]** button, and in the **[Intel(R) 82574L Gigabit Network Connection Properties]** window, click **[Link Speed]** tab.
- Click the **[Identify Adapter]** button, and in the **[Identify Adapter]** window, click the **[Start]** button.
- The LED for the Ethernet adapter port associated with the selected **[Local Area Connection]** icon blinks.

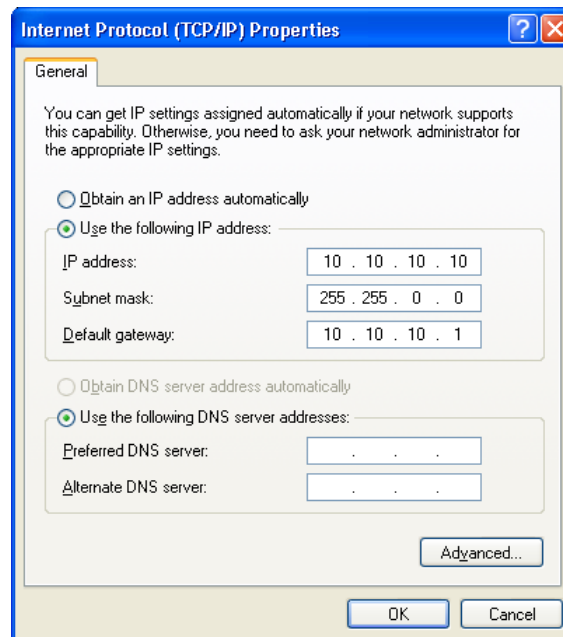
5. The **[Local Area Connection Properties]** window is displayed.
 - Select “**Internet protocol (TCP/IP)**” and click the **[Properties]** button.



2. BASIC SETTINGS AFTER OS SETUP

6. The **[Internet Protocol (TCP/IP) Properties] window** is displayed.

- Select **“Use the following IP address”** and enter the IP address, subnet mask, and default gateway.
- Click the **[OK] button**.



7. Close any open windows.

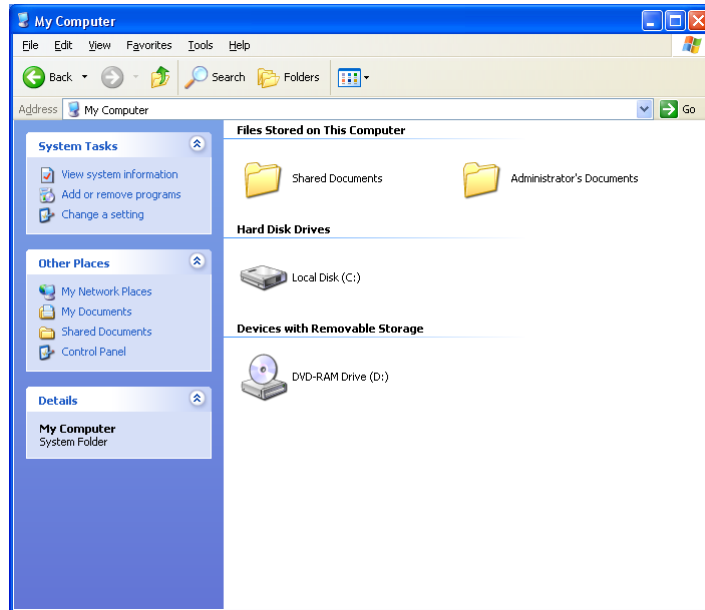
- Click the **[Close] button** in the **[Local Area Connection Properties] window**.
- Click the **[×] button** in the upper-right of the **[Network Connections] window**.

2.1.4 DVD drive settings (for DVD multi-drive implementations)

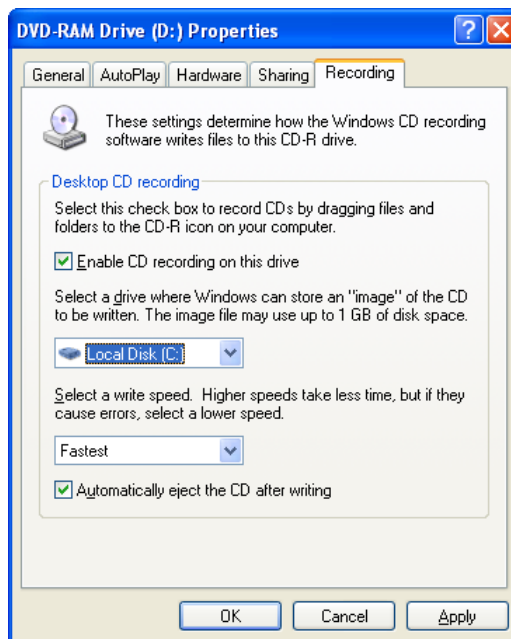
For DVD multi-drive implementations, change the DVD drive settings as follows to allow writes to DVD-RAM.

For DVD-ROM drive implementations, the following procedures are not needed.

1. Log on as a computer administrator if not already logged on as such.
2. Click the **[Start] button**, and then **[My Computer]**.
3. The **[My Computer] window** is displayed.
 - Right-click the **[DVD-RAM Drive] icon**, and choose **[Properties]** from the displayed pop-up menu.

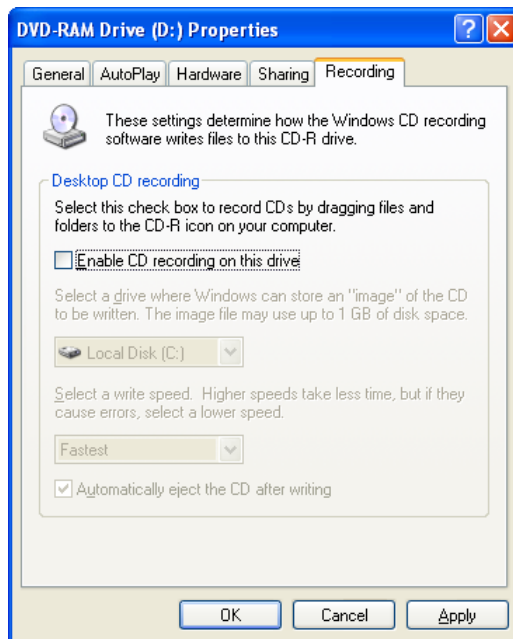


4. The **[DVD-RAM Drive Properties] window** is displayed. Click the **[Recording] tab**.



2. BASIC SETTINGS AFTER OS SETUP

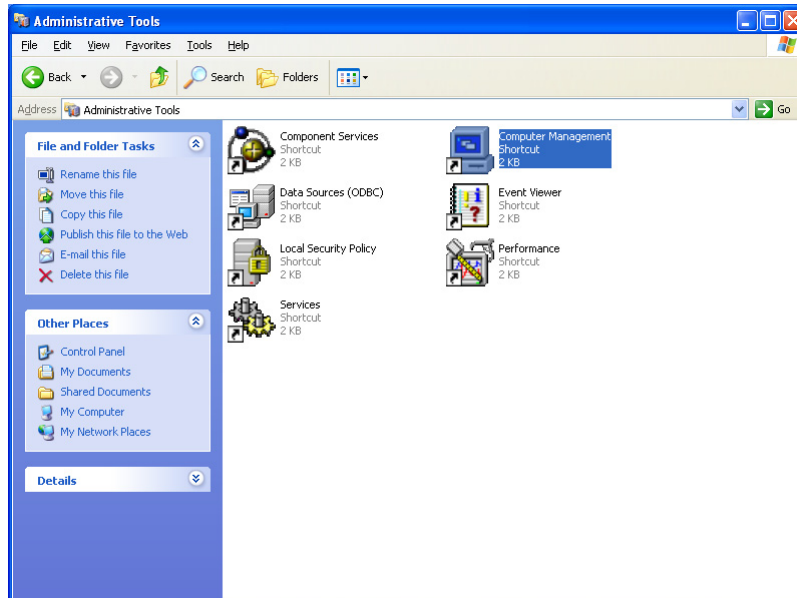
5. Clear the **[Enable CD recording on this drive]** checkbox, and click the **[OK]** button.



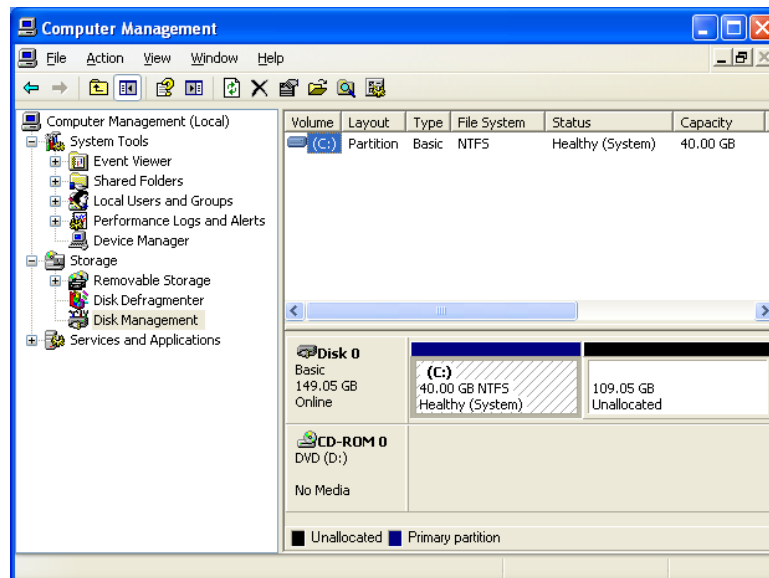
6. Click the **[×]** button in the upper-right of the **[My Computer]** window to close the screen.

2.1.5 Hard disk free space formatting

1. Log on as a computer administrator if not already logged on as such.
2. Click the **[Start] button**, and then choose **[Control Panel]**.
3. In the **[Control Panel] window**, click **[Performance and Maintenance]**, and then in the **[Performance and Maintenance] window**, click **[Administrative Tools]**.
4. The **[Administrative Tools] window** is displayed. Double-click the **[Computer Management] icon**.

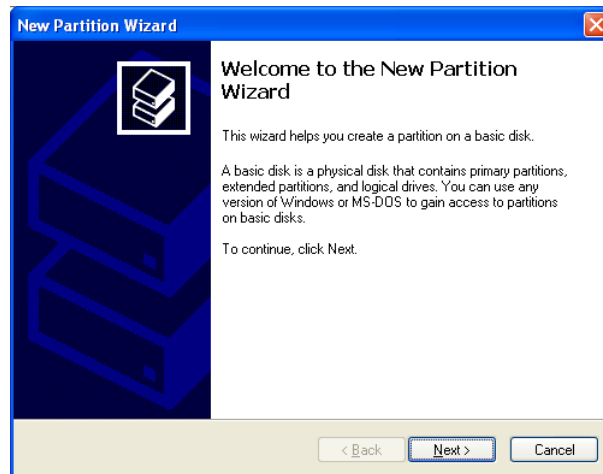


5. The **[Computer Management] window** is displayed. Click **“Disk Management”** under **“Storage”**.

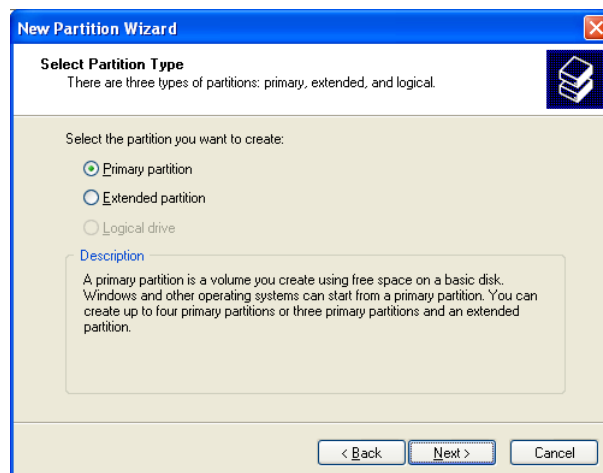


2. BASIC SETTINGS AFTER OS SETUP

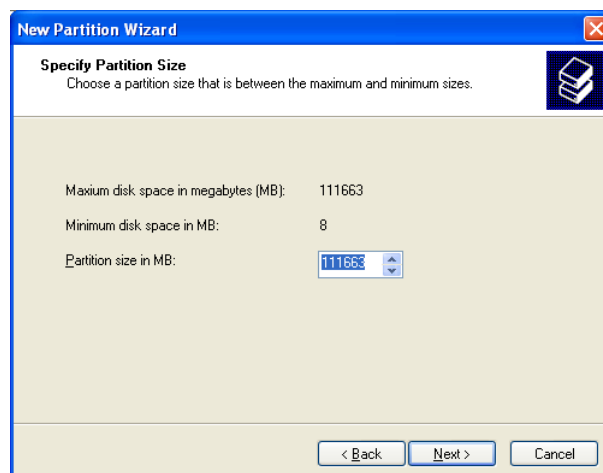
6. Right-click the area with **“Unallocated”** displayed, and choose **[New partition]** from the displayed menu. The new partition wizard is launched, so click the **[Next]** button.



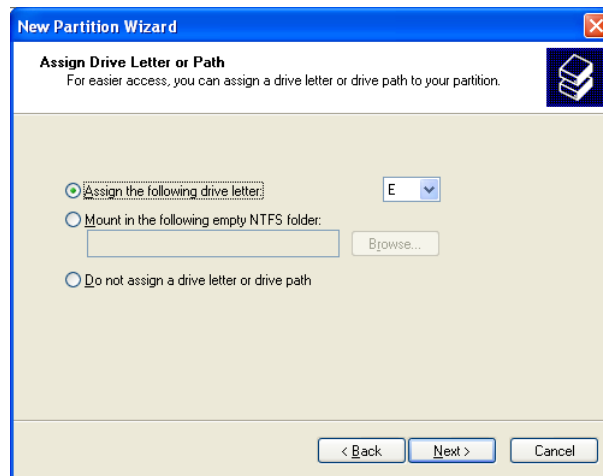
7. A screen for selecting the partition type is displayed. Choose the type of partition to be created, and click the **[Next]** button.



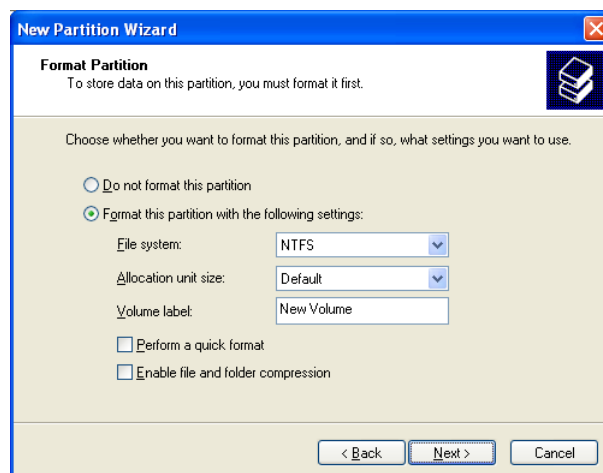
8. A screen for specifying the partition size is displayed. Specify any partition size, and click the **[Next]** button.



9. A screen for assigning the drive letter or path is displayed. Select **“Assign the following drive letter”** to assign the drive letter (or leave it as is if no change is needed), and click the **[Next]** button.

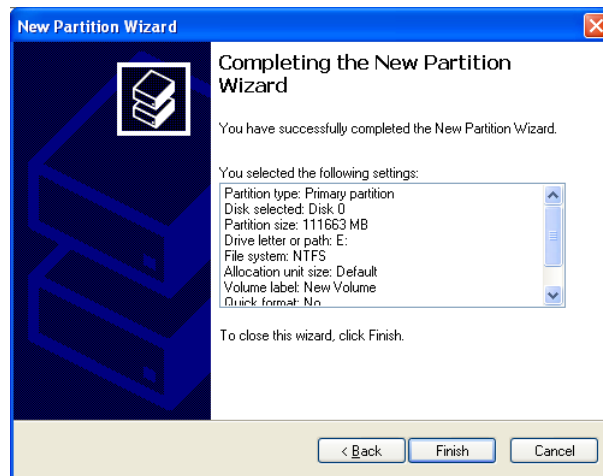


10. A screen for setting the partition format is displayed. Select **“Format this partition with the following settings”**, select **“NTFS”** for **“File system”**, and click the **[Next]** button.

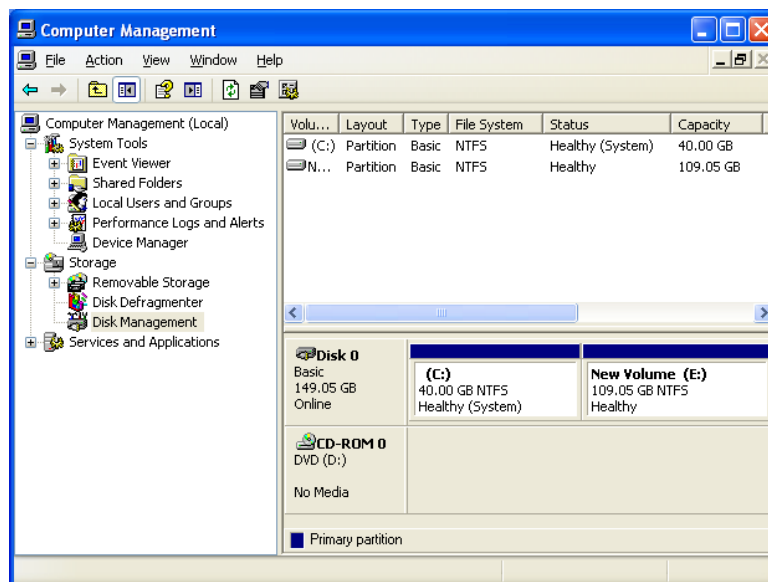


2. BASIC SETTINGS AFTER OS SETUP

11. The **[Completing the New Partition Wizard]** window is displayed. Click the **[Finish]** button.
 - Disk formatting is started.



12. When partition formatting is completed, **“Healthy”** is displayed for the created partition.



13. Click the **[x]** button in the upper-right of the **[Computer Management]** window to close the screen.
14. Click the **[x]** button in the upper-right of the **[Administrative Tools]** window to close the screen.

2.2 Windows® 7 Basic Settings

This section shows the basic settings procedures for pre-installed Windows® 7 Professional. Perform these procedures as needed after OS setup.

2.2.1 Overview of basic settings procedures

Screen settings



See “2.2.2 Screen settings.”

- This sets the screen resolution.
- The required time is roughly 3 minutes.

Automatic update settings



See “2.2.3 Automatic update settings.”

- The required time is roughly 5 minutes.

Network environment settings



See “2.2.4 Network environment settings.”

- The required time is roughly 10 minutes.

Hard disk formatting



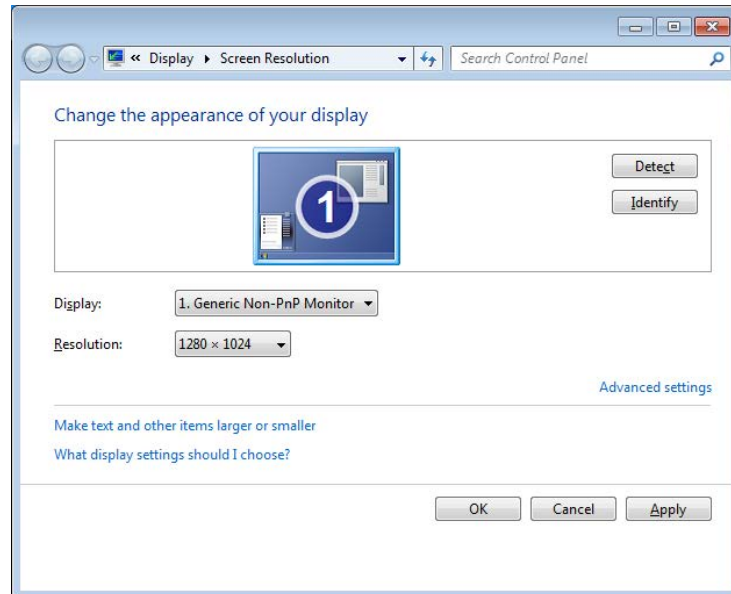
See “2.2.5 Formatting hard disk free space.”

- The time for formatting differs depending on the size of the partition to be formatted.

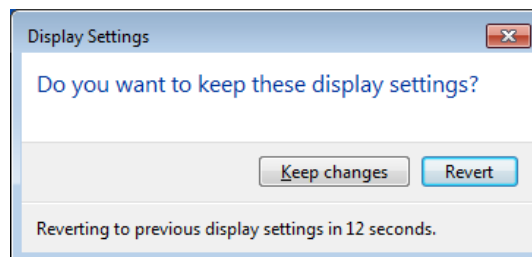
2. BASIC SETTINGS AFTER OS SETUP

2.2.2 Screen settings

1. Log on as a computer administrator if not already logged on as such.
2. Right-click on the desktop, and choose **[Screen resolution]** from the displayed pop-up menu.
3. Set the screen resolution as necessary, and click the **[OK]** button.



4. The **[Display Settings]** window is displayed. To save these settings, click the **[Keep changes]** button. Otherwise, click the **[Revert]** button to perform settings again.



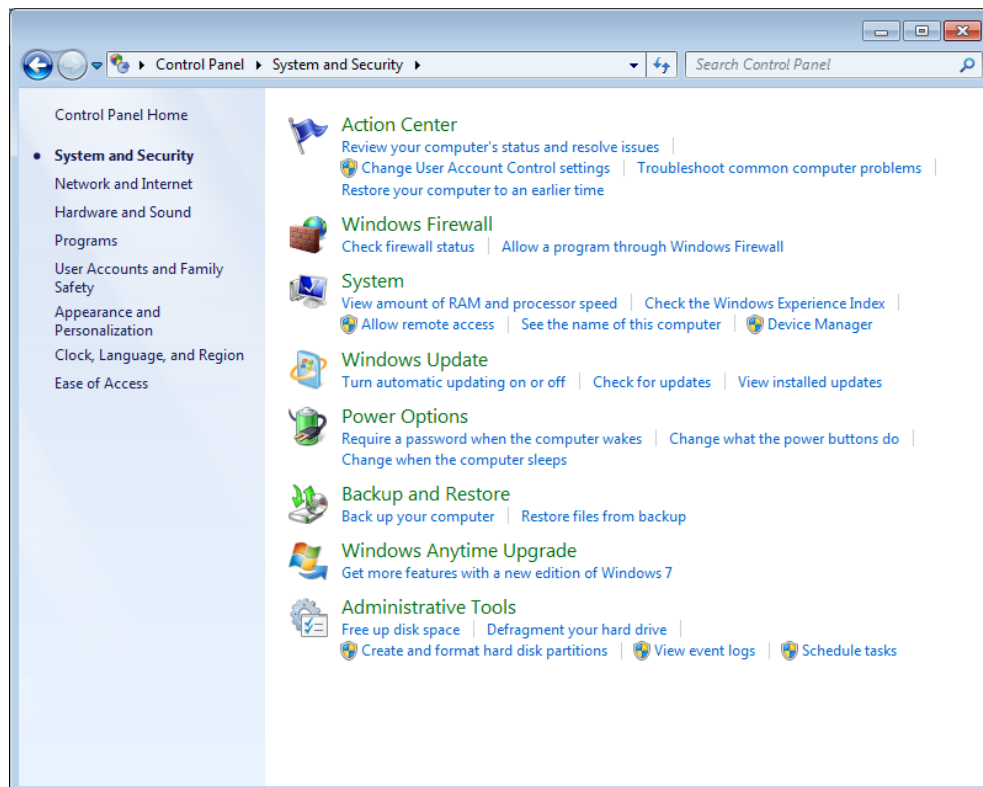
2.2.3 Automatic update settings

Windows® 7 comes with automatic update functionality using patches to solve software malfunctions. This enables automatic download and installation when a patch is published on Microsoft's web site.

However, this functionality may impact currently running applications, and automatically updated module may affect currently running programs. As such, make sure that this functionality is disabled.

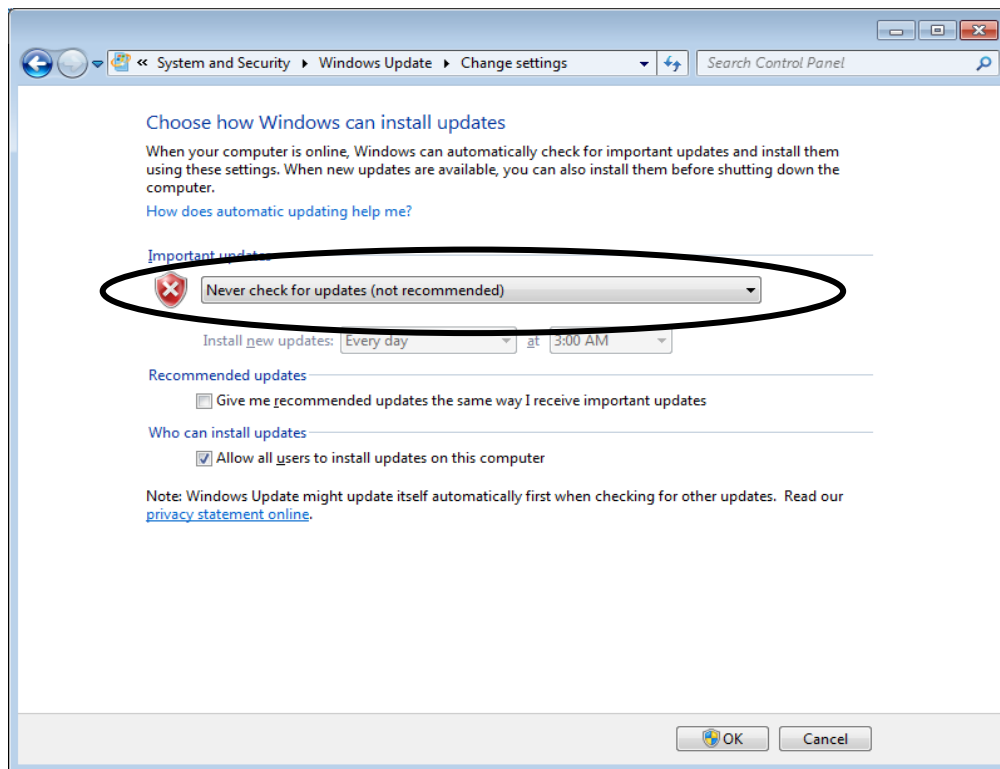
The procedures for disabling automatic update functionality are as follows.

1. Log on as a computer administrator if not already logged on as such.
2. Click the **[Start] button**, and then choose **[Control Panel]**.
3. The **[Control Panel] window** is displayed. Click **[System and Security]**.
4. Continue by clicking **[Turn automatic updating on or off]** in Windows Update.



2. BASIC SETTINGS AFTER OS SETUP

5. A screen for selecting how to install update programs is displayed. Select **“Never check for updates (not recommended)”**, and click the **[OK]** button.



6. Click the **[x]** button in the upper-right of the **[System and Security]** window.

2.2.4 Network environment settings

DHCP is set to be used by default for local area network (“**Obtain an IP address automatically**”). To set an IP address without using DHCP, perform the following procedures.

Note that the procedures explained here are for Internet protocol version 4 (TCP/IPv4). For Internet protocol version 6 (TCP/IPv6), choose “**Internet protocol version 6 (TCP/IPv6)**” in step 8.

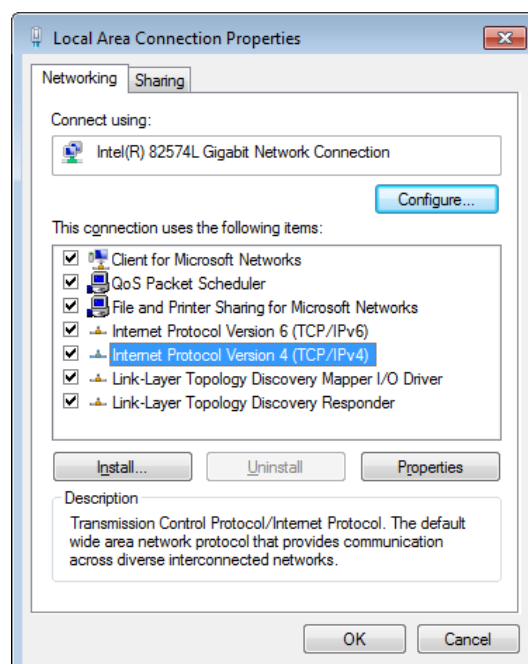
1. Log on as a computer administrator if not already logged on as such.
2. Click the [Start] button, and then choose [Control Panel].
3. Click [View network status and tasks] under “Network and Internet”.
4. The Network and Sharing Center is displayed. From the items on the left, click [Change adapter settings].
5. The [Network Connections] window is displayed.
6. Double-click the [Local Area Connection] icon.
7. If the [User Account Control] window is displayed, click the [Yes] button.

NOTE

If there are many [Local Area Connection] icons, perform the following procedures to link the icon and Ethernet adapter port.

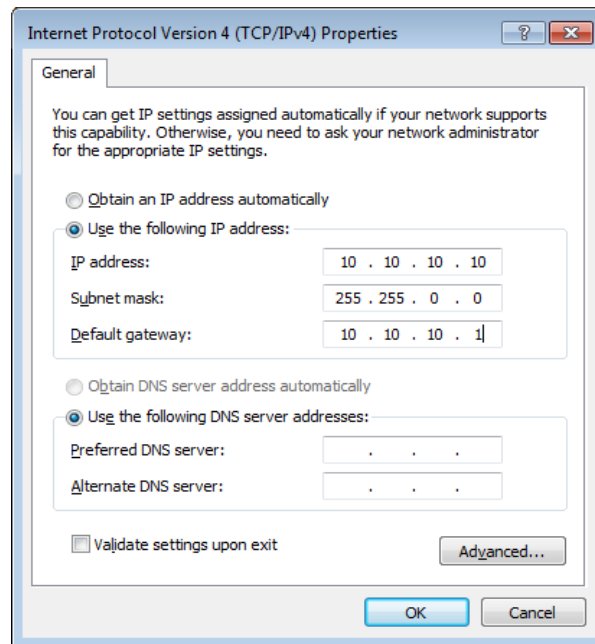
- Right-click a [Local Area Connection] icon, and choose [Properties] from the displayed pop-up menu.
- Click the [Configure] button, and in the [Intel(R) 82574L Gigabit Network Connection Properties] window, and click [Link Speed] tab.
- Click the [Identify Adapter] button, and in the [Identify Adapter] window, and click the [Start] button.
- The LED for the Ethernet adapter port associated with the selected [Local Area Connection] icon blinks.

8. The [Local Area Connection Properties] window is displayed.
 - Select “Internet Protocol Version 4 (TCP/IPv4)”, and click the [Properties] button.



2. BASIC SETTINGS AFTER OS SETUP

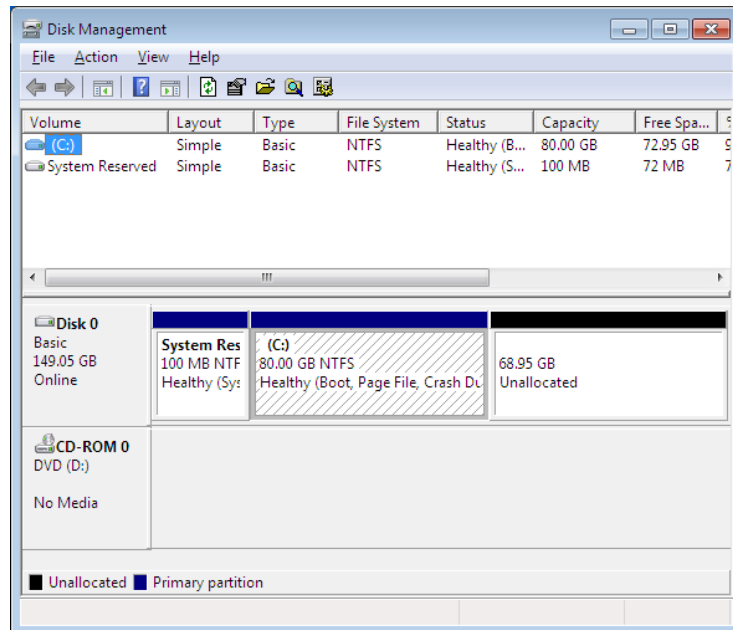
9. The **[Internet Protocol Version 4 (TCP/IPv4) Properties] window** is displayed.
- Select **“Use the following IP address”**, and enter the IP address, subnet mask, and default gateway.
 - Click the **[OK] button**.



10. Close the open screens.
- Click the **[Close] button** in the **[Local Area Connection Properties] window**.
 - Click the **[×] button** in the upper-right of the **[Network Connections] window**.

2.2.5 Formatting hard disk free space

1. Log on as a computer administrator if not already logged on as such.
2. Click the **[Start] button**, and then choose **[Control Panel]**.
3. Click **[System and Security]**, and then click **[Create and format hard disk partition]** in Administrative Tools.
4. If the **[User Account Control] window** is displayed, click the **[Yes] button**.
5. The **[Disk Management] window** is displayed. Right-click in the area for which **“Unallocated”** is displayed, and then choose **[New simple volume]** from the displayed menu.

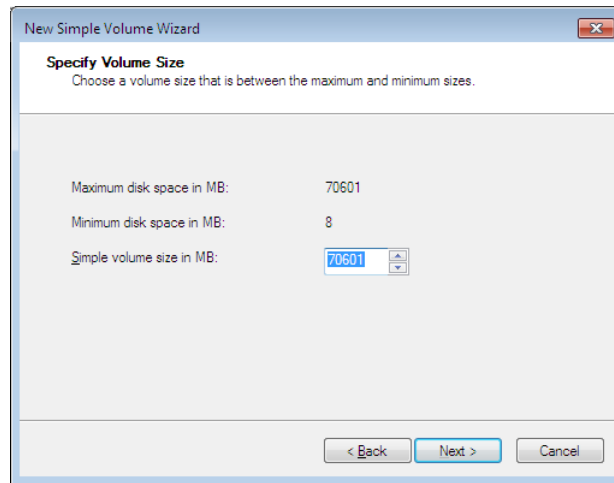


6. The New Simple Volume Wizard is launched. Click the **[Next] button**.

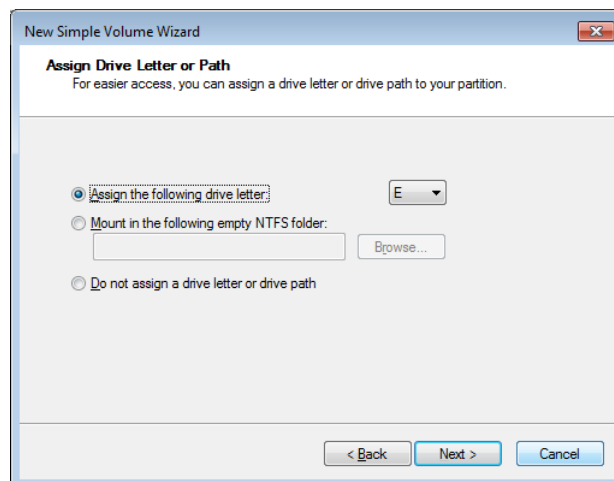


2. BASIC SETTINGS AFTER OS SETUP

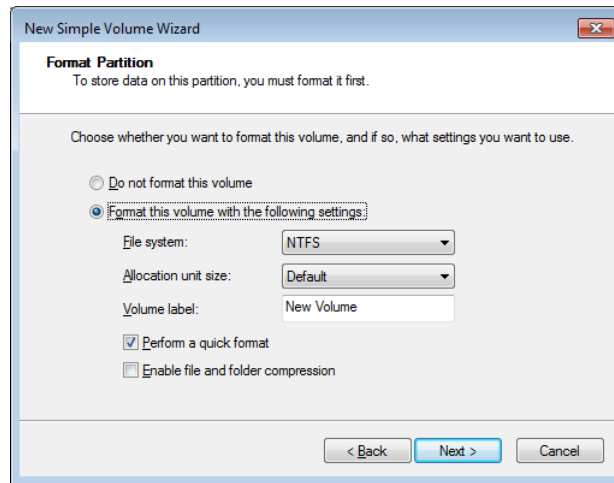
7. A screen for specifying the volume size is displayed. Specify any volume size, and click the **[Next]** button.



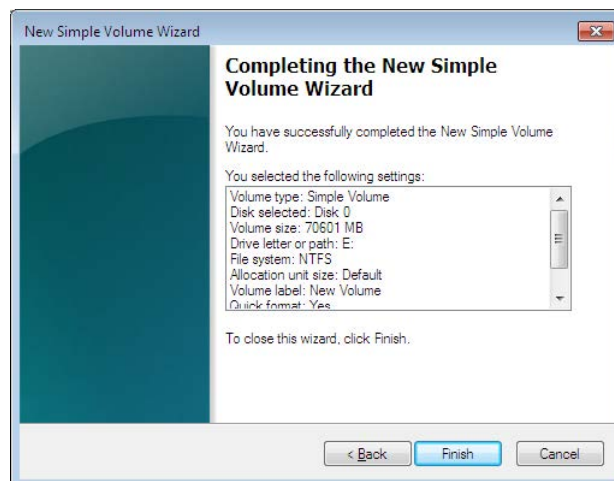
8. A screen for assigning the drive letter or path is displayed. Select “**Assign the following drive letter**” to assign the drive letter (or leave it as is if no change is needed), and click the **[Next]** button.



9. A screen for setting the partition format is displayed. Select **“Format this volume with the following settings”**, select **“NTFS”** for **“File system”**, and click the **[Next]** button.

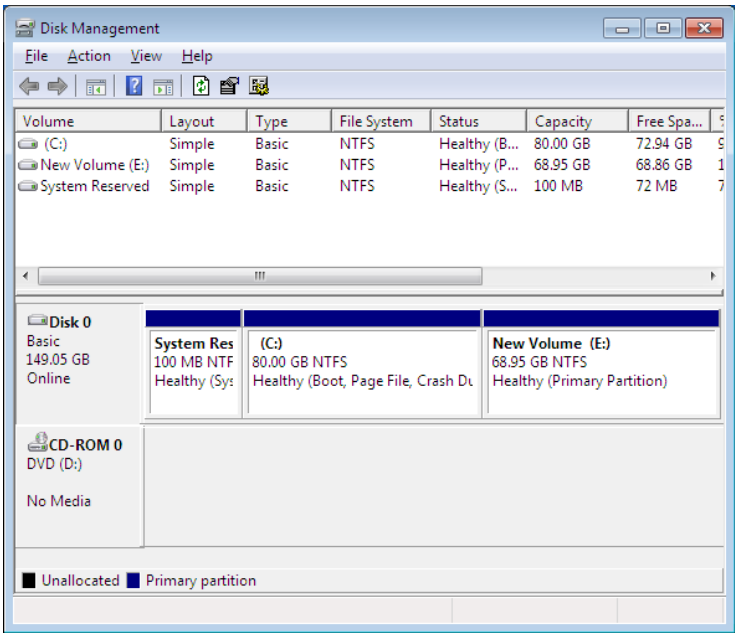


10. Click the **[Finish]** button in the **[Completing the New Simple Volume Wizard]** window.
- Disk formatting is started.



2. BASIC SETTINGS AFTER OS SETUP

11. When partition formatting is completed, **“Healthy”** is displayed for the created partition.



12. Click the [×] **button** in the upper-right of the [Disk Management] **window** to close the screen.

CHAPTER 3 USING THE RECOVERY DVD TO RESTORE FACTORY SETTINGS

This chapter explains procedures for the following:

- Abandon the current system and restore a system drive to factory settings

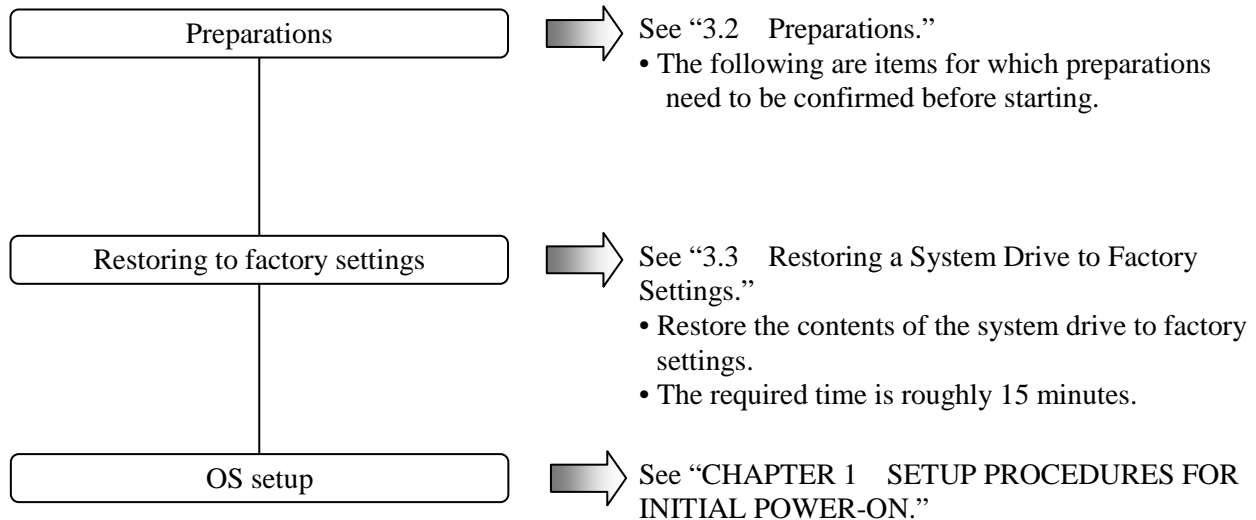
NOTE

The procedures in this chapter require a recovery DVD. This recovery DVD comes with HF-W if you purchased HF-W that include a recovery DVD.

3.1 Overview of Recovery Procedures

This section gives an overview of the procedures for resetting the current system to factory settings. After the recovery DVD is used to restore the contents of the system drive (the drive on drive bay 1 of the hard disk) to factory settings, set up the OS as shown in “CHAPTER 1 SETUP PROCEDURES FOR INITIAL POWER-ON.”

The following shows an overall flow for these procedures.



NOTE

For the HF-W2000 model 35/30 A model (SATA-HDD model), if the recovery DVD is used to perform restoration with a drive in hard disk drive bay 2, the drive letter of the DVD drive may differ from the factory settings.

In this case, change the drive letter as necessary after setup.

3. USING THE RECOVERY DVD TO RESTORE FACTORY SETTINGS

NOTICE

The recovery DVD contains an image file created from the factory-set hardware configuration. As such, if the hardware configuration differs from the factory settings, the operating system may not run normally even when restoration is performed. For restoration using the recovery DVD, remove all external memory devices, and then use the factory-set hardware configuration. Likewise, since using the recovery DVD will delete all data on the system drive, perform backup beforehand as necessary.

3.2 Preparations

The following explains software for which preparation is necessary. If a recovery DVD came with the purchased HF-W, it is included in the package of HF-W. Make sure to perform these preparations before starting.

HF-W-specific recovery DVD	HITACHI <u>HJ-203**E*E*</u> Product Recovery DVD (The underlined part indicates the model for the purchased HF-W2000 model 35/30.)
----------------------------	---

3.3 Restoring a System Drive to Factory Settings

Perform the following procedures to use the recovery DVD to restore the system drive for the HF-W2000 model 35/30 to the factory settings.

1. Turn on the power for HF-W, and insert the recovery DVD (“HITACHI HJ-203**E*E* Product Recovery DVD”) in the DVD drive (the underlined part indicates the model for the purchased HF-W2000 model 35/30, with each asterisk differing by model. For the following procedures, replace the similar part with the model of the purchased HF-W2000 model 35/30).
2. Boot from the recovery DVD. The following confirmation message is displayed.

```

*****
                        Confirmation

“HITACHI HJ-203**E*E* Product Recovery DVD” is
only used for HJ-203**E*E*.
Is this computer HJ-203**E*E*?

*****

(Yes[y]/No[n]) :

```

If the **[n]** key is pressed, the following message is displayed, and confirmation is canceled. Press the power switch to cut power to HF-W.

```

(Yes[y]/No[n]) :n

System recovery process is canceled.

```

3. If the **[y]** key is pressed, a message confirming whether to start drive restoration is displayed.

```

*****

                        Attention

This recovery program deletes all personal data and
your customized configuration settings. It resets
HJ-203**E*E* to the factory-shipped default values.
Be sure to back up your personal files before you use
this DVD.

*****

continue?
(Yes[y]/No[n]) :

```

If the **[n]** key is pressed, the following message is displayed, and confirmation is canceled. Press the power switch to cut power to HF-W.

```

(Yes[y]/No[n]) :n

System recovery process is canceled.

```


3. USING THE RECOVERY DVD TO RESTORE FACTORY SETTINGS

4. If the **[y]** key is pressed, a message confirming whether to change boot partition capacity is displayed.

In case of the S model (SATA-SSD model) of the HF-W2000 model 35/30, drive restoration is started, and the progress is displayed (skip to step 6).

```
*****
                        Attention

This recovery program deletes all personal data and
your customized configuration settings. It resets
HJ-203**E*E* to the factory-shipped default values.
Be sure to back up your personal files before you use
this DVD.

*****

continue?
(Yes[y]/No[n]):y

Do you change the size of boot partition?
In case of "No", it is set to the default size (NNN MB).
(Yes[y]/No[n]):
```

If the **[n]** key is pressed, a message confirming whether to restore the boot partition with the same capacity (NNN MB) as the factory settings is displayed.

```
(Yes[y]/No[n]):n

Set the boot partition size to NNN MB.

Continue?
(Yes[y]/No[n]):
```

If the **[y]** key is pressed, drive restoration is started, and the progress is displayed (skip to step 6).

If the **[n]** key is pressed, the following message is displayed, and the change of boot partition capacity is canceled. Press the power switch to cut power to HF-W.

```
(Yes[y]/No[n]):n

System recovery process is canceled.
```

5. If the **[y]** key is pressed in response to the boot partition capacity change confirmation message displayed in step 4, a message for entering the boot partition capacity is displayed.

```
Do you change the size of boot partition?
In case of "No", it is set to the default size (NNN MB).
(Yes[y]/No[n]):y

Input the size of boot partition by the megabyte[MB] and press
ENTER.
partition size(MIN-MAX[MB]):
```

The minimum (MIN) and maximum (MAX) values that can be input are displayed. Enter the boot partition capacity in MB (1 MB = 1,048,576 bytes), and press the **[Enter]** key. When the boot partition capacity is entered, an input confirmation message is displayed.

```
partition size(MIN-MAX[MB]):20000

Set the boot partition size to 20000 MB.

Continue?
(Yes[y]/No[n]):
```

If the **[y]** key is pressed, drive restoration is started, and the progress is displayed (skip to step 6).

If the **[n]** key is pressed, the following message is displayed, and the change of boot partition capacity is canceled. Press the power switch to cut power to HF-W.

```
(Yes[y]/No[n]):n

System recovery process is canceled.
```

If a value outside of the valid range of input is entered, the following message is displayed. Enter another number.

```
Input error.

Input the size of boot partition by the megabyte[MB] and press
ENTER.
partition size(MIN-MAX[MB]):
```

6. If the **[y]** key is pressed, drive restoration is started, and the progress is displayed.

```
HJ-203**E*E* system recovery START.
xx%
```

3. USING THE RECOVERY DVD TO RESTORE FACTORY SETTINGS

7. Once all drive restoration is completed using the recovery DVD, the following message is displayed. Eject the recovery DVD from the DVD drive.

HJ-203**E*E* system recovery CONTINUE.
100%
COMPLETED.

Remove "HITACHI HJ-203**E*E* Product Recovery DVD"
from the DVD drive and restart HJ-203**E*E*.

8. Press the power switch to cut power to HF-W, and then press it again to turn power back on.

The HF-W2000 model 35/30 system drive has been restored to factory settings using the recovery DVD. Perform the procedures shown in "CHAPTER 1 SETUP PROCEDURES FOR INITIAL POWER-ON" to set up the OS.

CHAPTER 4 PRECAUTIONS

4.1 Event Logging During Setup of Windows® 7

The following events may be logged during setup of Windows® 7 for this product, but do not affect system operation.

Type: Error

Source: Service Control Manager

Event ID: 7022

Type: Warning

Source: Microsoft-Windows-Search

Event ID: 1008

4.2 Event Logging While Windows® 7 Is Running

The following events may be logged while Windows® 7 is running in this product, but do not affect system operation.

Type: Error

Source: Microsoft-Windows-WMI

Event ID: 10

Type: Warning

Source: Microsoft-Windows-User Profiles Service

Event ID: 1530

Type: Warning

Source: Microsoft-Windows-Search

Event ID: 3036

Also, the following event may be logged during initial startup after a USB device connection or disconnection occurs, or when a storage device is added. Since this is also recorded according to the Windows® 7 specification, system operation is not affected.

Type: Error

Source: Disk

Event ID: 11

4.3 Precautions Regarding the Windows® 7 Command Prompt

When multiple (several hundred) command prompts are opened without restarting Windows® 7, the desktop screen may not be redrawn normally. This is because Explorer (process name: explorer.exe) consumes drawing resources every time a command prompt is opened.

When opening command prompts frequently (such as when executing batch files repeatedly), you have to restart Windows® 7 regularly. Also restart Windows® 7 when this phenomenon occurs.

4. PRECAUTIONS

4.4 Default Scheduled Functionality of Windows® 7

With Windows® 7, several kinds of functionality are scheduled by default to run regularly in the background. This functionality includes Windows Defender (anti-spyware functionality) and disk defrag, which place significant load on the system during operation, and can affect the operation of running applications. As such, we recommend changing the schedule times as necessary to prevent overlap with schedules on which applications run.

The initial schedule settings are as follows.

- Windows Defender
 - Frequency: Daily
 - Start time: 2:00
- Disk defrag tool
 - Frequency: Weekly
 - Day: Wednesday
 - Start time: 1:00

4.5 Precautions Regarding Security Enhancement Functionality

(1) Unblocking for the Windows firewall

For Windows® XP Service Pack 2 and later, the Windows firewall is enabled by default. This means that network connections are blocked for programs using the network, possibly preventing program operation. In this case, one of the following three methods can be used to unblock programs from the Windows firewall.

- (a) Disable the Windows firewall
- (b) Register target programs as exceptions
- (c) Register used ports as exceptions

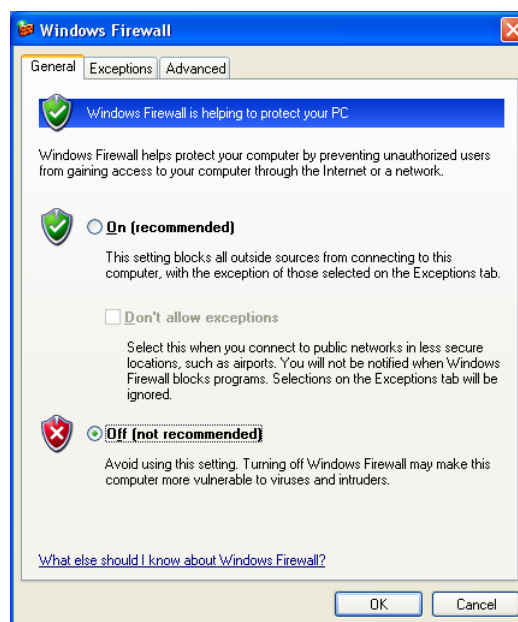
The following shows the procedures for each setting.

(a) Disabling the Windows firewall

Perform the following procedures to disable the Windows firewall. This will unblock network connections for all programs.

● For Windows® XP

1. Log on as a computer administrator if not already logged on as such.
2. Click the **[Start] button**, and then choose **[Control Panel]**.
3. In the **[Control Panel] window**, click **[Security Center]**.
4. The **[Windows Security Center] window** is displayed.
 - Click **[Windows Firewall]**.
5. The **[Windows Firewall] window** is displayed.
 - Click the **[General] tab**, and select **“Off (not recommended)”**.
 - Click the **[OK] button**.

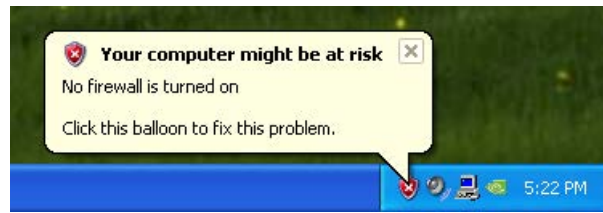


6. Close the **[Windows Security Center] window**.
7. Close the **[Control Panel] window**.

4. PRECAUTIONS

NOTE

When these settings are performed, a security center warning is displayed in the taskbar.



To hide this warning, perform the following to change settings.

1. Log on as a computer administrator if not already logged on as such.
2. Click the **[Start] button**, and then choose **[Control Panel]**.
3. In the **[Control Panel] window**, click **[Security Center]**.
4. The **[Windows Security Center] window** is displayed.
 - From the help on the left of the screen, click **“Change the way Security Center alerts me”**.



5. The **[Alert Settings] window** is displayed.

- Clear the **“Firewall”** checkbox.
- Click the **[OK] button**.

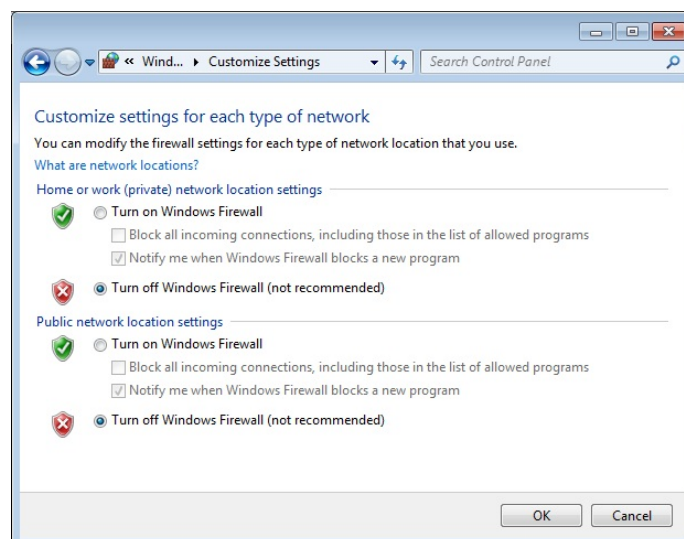


6. Close the **[Windows Security Center] window**.

7. Close the **[Control Panel] window**.

● For Windows® 7

1. Log on as a computer administrator if not already logged on as such.
2. Click the **[Start] button**, and then choose **[Control Panel]**.
3. In the **[Control Panel] window**, click **[System and Security]**.
4. The **[System and Security] window** is displayed.
 - Click **[Windows Firewall]**.
5. The **[Windows Firewall] window** is displayed.
 - Click **[Turn Windows Firewall on or off]**.
6. The **[Customize Settings] window** is displayed.
 - Select **[Turn off Windows Firewall]**.
 - Click the **[OK] button**.



7. Close the **[Windows Firewall] window**.

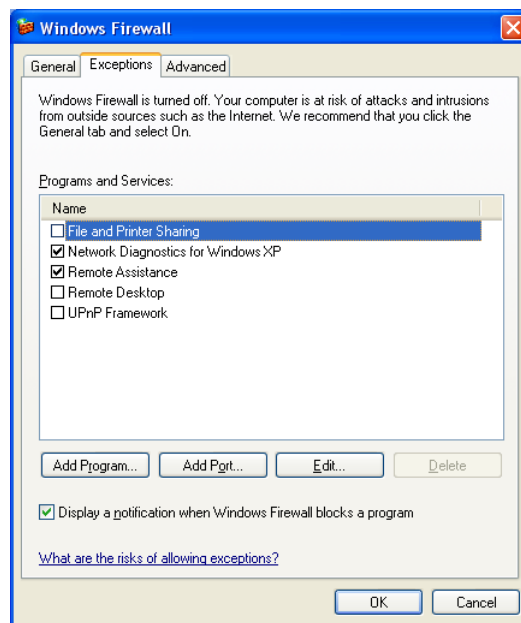
4. PRECAUTIONS

(b) Registering a target program as an exception

Perform the following procedures to register a target program as an exception for the Windows firewall. Programs registered as exceptions are not blocked from network connection.

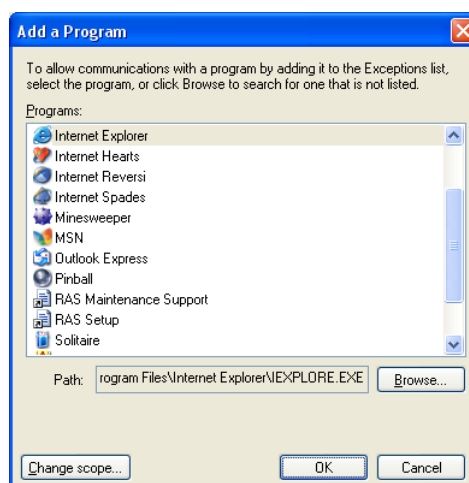
● For Windows® XP

1. Click the **[Start]** button, and then choose **[Control Panel]**.
2. In the **[Control Panel]** window, click **[Security Center]**.
3. The **[Windows Security Center]** window is displayed.
 - Click **[Windows Firewall]**.
4. The **[Windows Firewall]** window is displayed.
 - Click the **[Exceptions]** tab, and then the **[Add Program]** button.



5. The **[Add Program]** window is displayed.

- Select the program to be unblocked. For programs not listed, click the **[Browse]** button and then select the file.
- Click the **[OK]** button.



6. In the **[Windows Firewall] window**, make sure that the program selected in the **[Exceptions] tab** is registered, and click the **[OK] button**.
7. Close the **[Windows Security Center] window**.
8. Close the **[Control Panel] window**.

Also, exceptions can be registered from the following dialog box, displayed upon application startup.

1. If the network connection is blocked for the started application, the following dialog box is displayed.
 - Click the **[Unblock] button**.



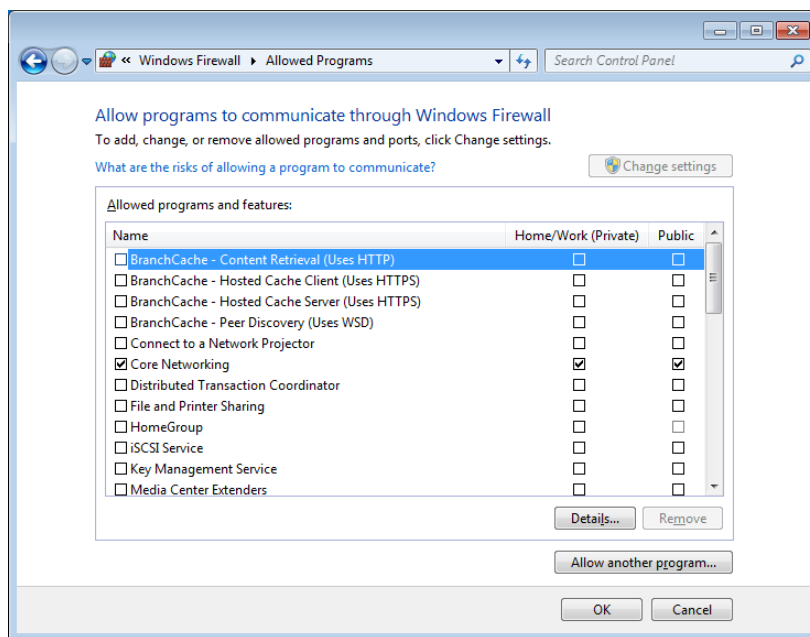
2. This program is registered as an exception.

4. PRECAUTIONS

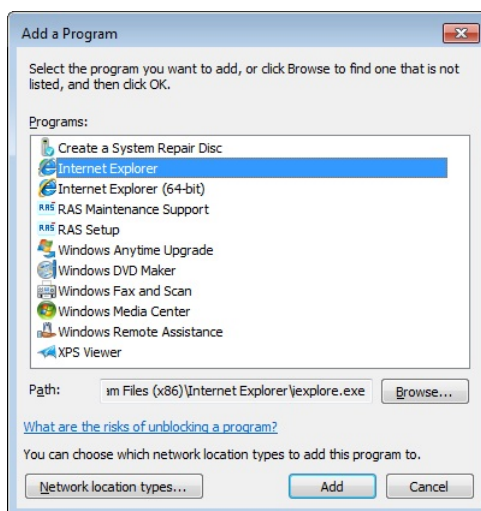
- For Windows® 7

1. Log on as a computer administrator if not already logged on as such.
2. Click the **[Start] button**, and then choose **[Control Panel]**.
3. In the **[Control Panel] window**, click **[System and Security]**.
4. The **[System and Security] window** is displayed.
 - Click **[Windows Firewall]**.
5. The **[Windows Firewall] window** is displayed.
 - Click **[Allow a program or feature through Windows Firewall]**.
6. The **[Allowed Programs] window** is displayed.
 - Click the **[Allow another program] button**.

Note: If you cannot click the **[Allow another program...] button**, click the **[Change settings] button** to enable the button.

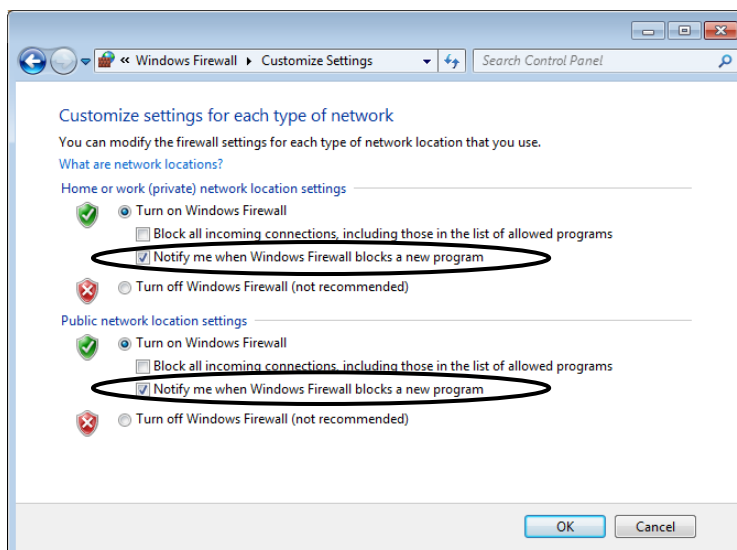


7. The **[Add a Program] window** is displayed.
 - Select the program to be unblocked. For programs not listed, click the **[Browse]** button and then select the file.
 - Click the **[Add]** button.



8. In the **[Allowed Programs] window**, make sure that the program selected in **[Allowed programs and features]** is registered, and click the **[OK]** button.
9. Close the **[Windows Firewall] window**.

Note that for the Windows firewall settings, if the **[Notify me when Windows Firewall blocks a new program]** setting is enabled, the following dialog box is displayed when the application starts up to allow exception registration.



4. PRECAUTIONS

1. The following dialog box is displayed when the network connection is blocked for the started application.
 - Click the **[Allow access] button**.



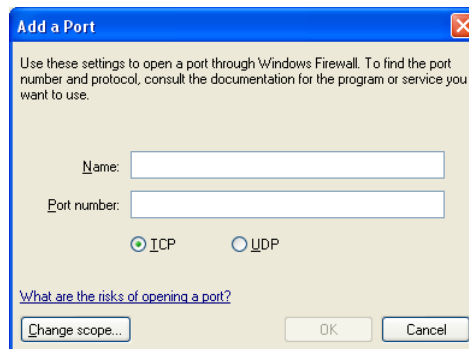
2. This program is registered as an exception.

(c) Registering a used port as an exception

Perform the following procedures to register a used port as an exception. Ports registered as exceptions are not blocked from network connection.

● For Windows® XP

1. Click the **[Start] button**, and then choose **[Control Panel]**.
2. In the **[Control Panel] window**, click **[Security Center]**.
3. The **[Windows Security Center] window** is displayed.
 - Click **[Windows Firewall]**.
4. The **[Windows Firewall] window** is displayed.
 - Click the **[Exceptions] tab**, and then the **[Add Port] button**.
5. The **[Add Port] window** is displayed.
 - Enter the port name in the **[Name] field**.
 - Enter the port number to be registered as an exception, in the **[Port number] field**.
 - Select the protocol type.
 - Click the **[OK] button**.



6. In the **[Windows Firewall] window**, make sure that the port selected in the **[Exceptions] tab** is registered, and click the **[OK] button**.
7. Close the **[Windows Security Center] window**.
8. Close the **[Control Panel] window**.

4. PRECAUTIONS

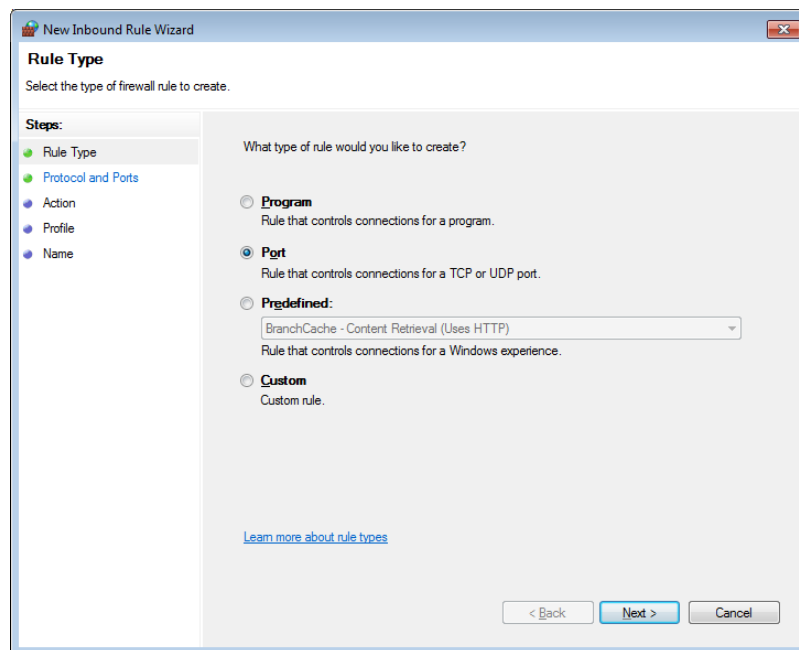
- For Windows® 7

1. Log on as a computer administrator if not already logged on as such.
2. Click the **[Start] button**, and then choose **[Control Panel]**.
3. In the **[Control Panel] window**, click **[System and Security]**.
4. The **[System and Security] window** is displayed.
 - Click **[Windows Firewall]**.
5. The **[Windows Firewall] window** is displayed.
 - Click **[Advanced settings]**.
6. The **[Windows Firewall with Advanced Security] window** is displayed.
 - Click **[Inbound Rules]** or **[Outbound Rules]**.
 - In the **[Actions]** pane, click **[New Rule]**.

Note: Select **[Inbound Rules]** or **[Outbound Rules]** based on the purpose of the port to be registered.

The following shows the procedures for when **[Inbound Rules]** is selected.

7. The **[Rule Type] window** for the **[New Inbound Rule Wizard]** is displayed.
 - Select **[Port]**, and click the **[Next] button**.

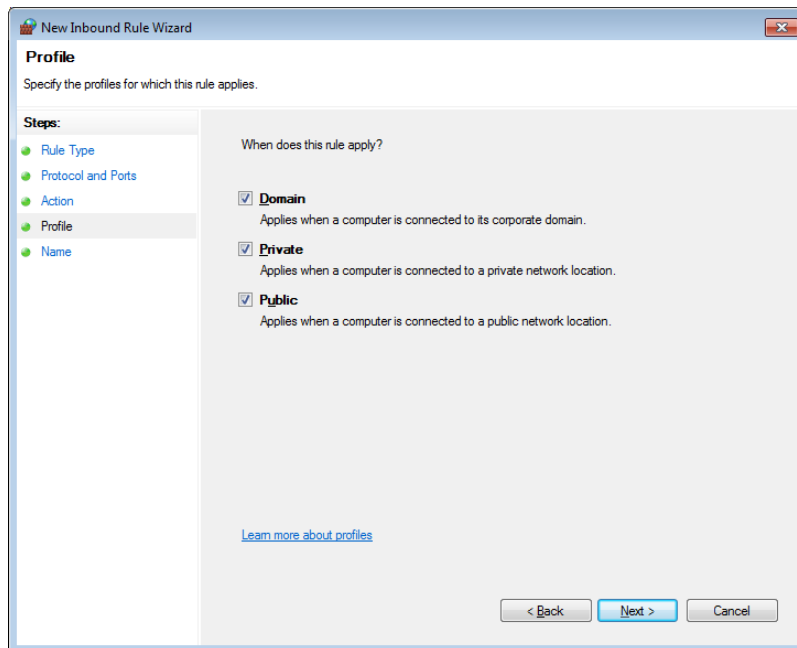


8. The **[Protocol and Ports]** window for the **[New Inbound Rule Wizard]** is displayed.
- Select the protocol type.
 - Select either **[All local ports]** or **[Specific local ports]**.
 - If **[Specific local ports]** was selected, enter the port number.
 - Click the **[Next]** button.

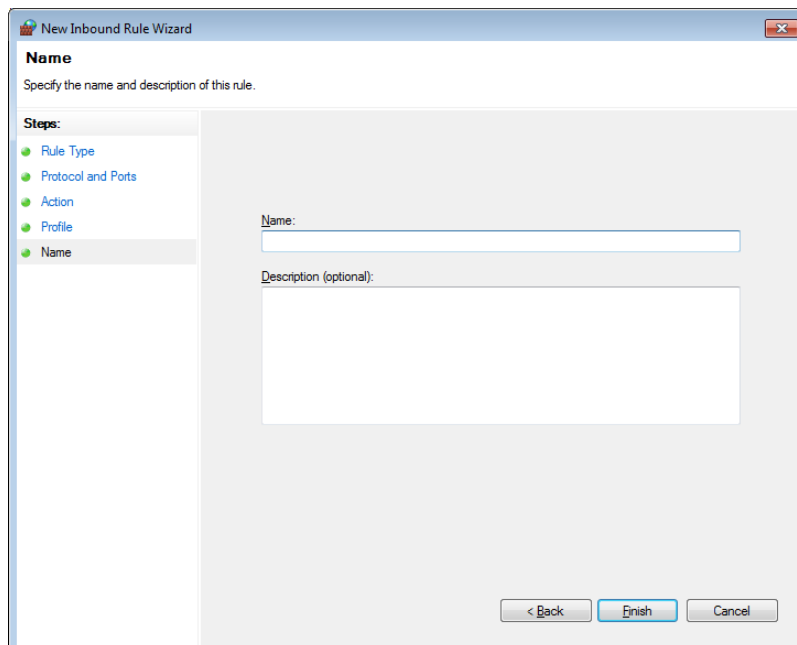
9. The **[Action]** window for the **[New Inbound Rule Wizard]** is displayed.
- Select **[Allow the connection]**.
 - Click the **[Next]** button.

4. PRECAUTIONS

10. The **[Profile] window** for the **[New Inbound Rule Wizard]** is displayed.
 - Specify the profile for which the rule is to be applied.
 - Click the **[Next] button**.



11. The **[Name] window** for the **[New Inbound Rule Wizard]** is displayed.
 - Enter the port name in the **[Name] field**.
 - Click the **[Finish] button**.

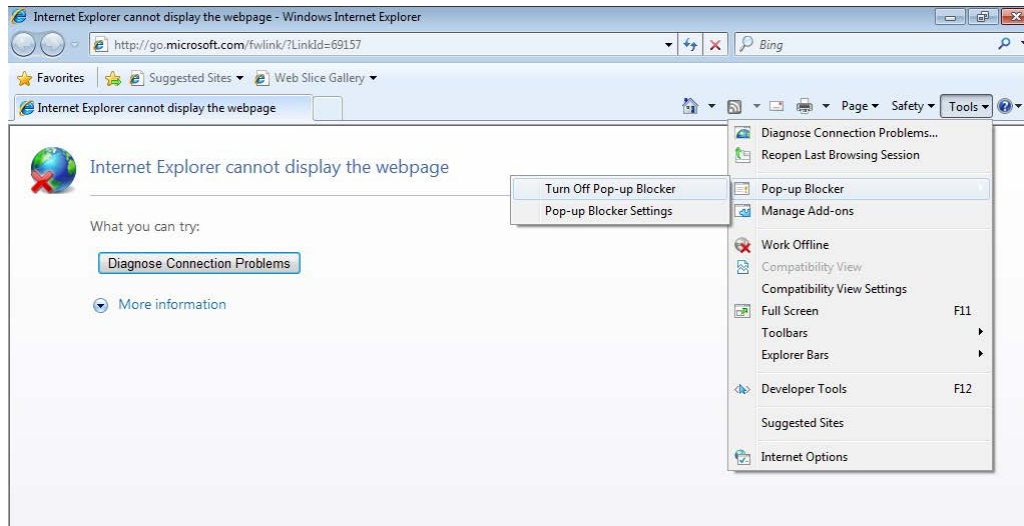


12. Make sure that the created rule was registered in **[Inbound Rules]** for the **[Windows Firewall with Advanced Security] window**, and close the screen.
13. Close the **[Windows Firewall] window**.

(2) Disabling Internet Explorer® pop-ups

Internet Explorer® comes with functionality to block Internet Explorer® pop-up windows. This means that if a web application uses pop-up windows, they may be blocked, preventing normal operation. Perform the following procedures to disable pop-up blocking functionality.

1. Start Internet Explorer®.
2. From **[Tools]**, choose **[Pop-up Blocker]**, and then **[Turn Off Pop-up Blocker]**.

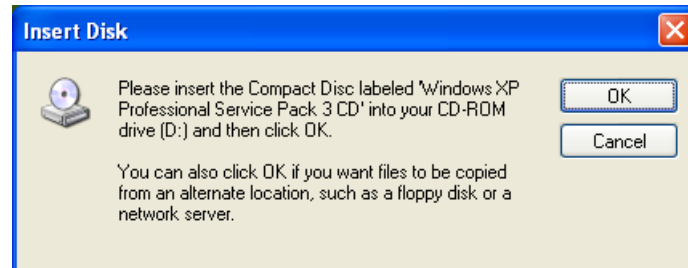


4. PRECAUTIONS

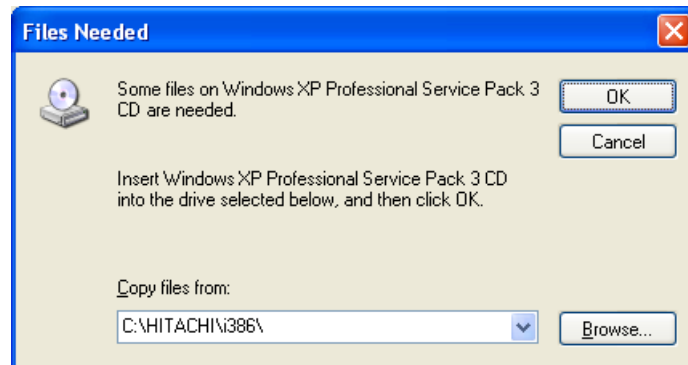
4.6 Entering the Search Location When Adding Components (for Windows® XP Only)

When a new component (such as a network protocol, service, or driver) is added, the location for searching for Windows® XP files may need to be entered.

1. A screen prompting the CD-ROM for Windows® XP to be inserted into the drive is displayed. Click the **[OK]** button.



2. A screen prompting the search location to be entered is displayed. Enter “C:\HITACHI\i386\”, and click the **[OK]** button (enter the system drive letter in the underlined area).



4.7 HITACHI Directory (for Windows® XP Only)

When this product is provided to the end user, the following files need to be deleted from the i386 directory in the HITACHI directory.

Perform the following procedures to delete the corresponding directories.

1. Click the **[Start]** button, and choose **[All Programs]**, **[Accessories]**, and then **[Command Prompt]**.
2. In the **[Command Prompt]** window, enter the following and press the **[Enter]** key.
rmdir /s C:\HITACHI\i386

NOTE

Once this directory is deleted, new Windows components can no longer be added. Before deleting it, make sure that all needed components have been added.

4.8 Notes on the File Sharing for Windows® 7

When sharing files via the network using Windows® 7 or Windows Server 2008 R2, STOP 0x7e might be displayed. If you share files, visit the following Microsoft URL for details and preventive measures against errors.

Operating system intermittently crashes with a “0x0000007E” Stop error message on a computer that is running Windows 7 or Windows Server 2008 R2

<http://support.microsoft.com/kb/2528614>

This Page Intentionally Left Blank

APPENDIX A SETUP PROCEDURES FOR INSTALLING Windows XP Mode (FOR Windows® 7 ONLY)

The following explains the procedures for installing Windows XP Mode. Before performing these setup procedures, read the following notice carefully, and perform these procedures for Windows XP Mode only.

NOTE

- The Windows® 7 built-in model for this product contains Windows XP Mode (virtual environment with a Windows® XP for which the license has been confirmed). Windows XP Mode allows applications built for Windows® XP that cannot otherwise run in Windows® 7 to be used. This is a last resort for maintaining application compatibility. As such, use this when problems with application compatibility cannot be resolved. The S model does not support Windows XP Mode.
 - Windows XP Mode does not guarantee operation for all Windows® XP applications.
 - When using Windows XP Mode, install the main memory card that satisfies the following sizes:
 - If the OS is a 32-bit version: 2 GB or more
 - If the OS is a 64-bit version: 3 GB or more
-

<When Windows XP Mode is not used>

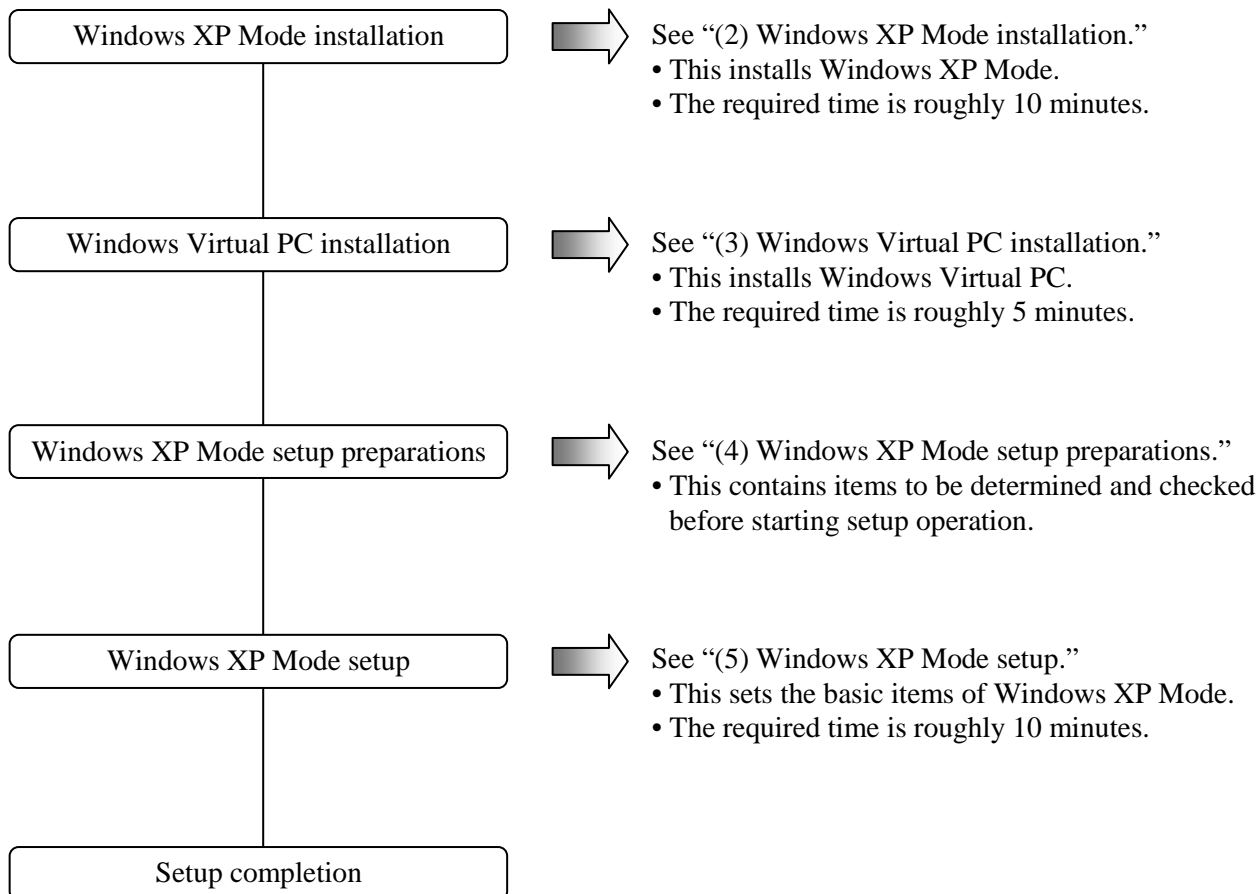
Since the files used for Windows XP Mode setup contain a virtual hard disk file for the guest OS, they occupy roughly 2 GB of disk space. As such, if Windows XP Mode is not used, we recommend the following procedures to delete these directories.

1. Log on as a computer administrator if not already logged on as such.
2. Open a command prompt.
 - Click the **[Start] button**, and choose **[All Programs]**.
 - Click **[Accessories]**.
 - Right-click **[Command Prompt]**, and choose **[Run as administrator]** from the displayed menu.
(If the logged-on administrator account is the built-in Administrator account, click **[Command Prompt]**.)
 - If the **[User Account Control] window** is displayed, click the **[Yes] button**.
3. Enter the following in the **[Command Prompt] window**, and press the **[Enter] key**.
`rmdir /s C:\HITACHI\XP_Mode`

(1) Overview of setup procedures

The following explains the setup procedures for Windows XP Mode (guest OS: Microsoft® Windows® XP Professional).

The overall flow for settings is as follows.



For details about the procedures for deleting Windows XP Mode and Windows Virtual PC from a computer, see “(6) Windows XP Mode and Windows Virtual PC uninstallation.”

NOTE

- Since Windows XP Mode runs an instance of Microsoft® Windows® XP Professional SP3 on a virtual machine, Windows Virtual PC needs to be installed.
- Windows XP Mode and Windows Virtual PC should be installed by the end user of this product, or by a proxy responsible for system setup.

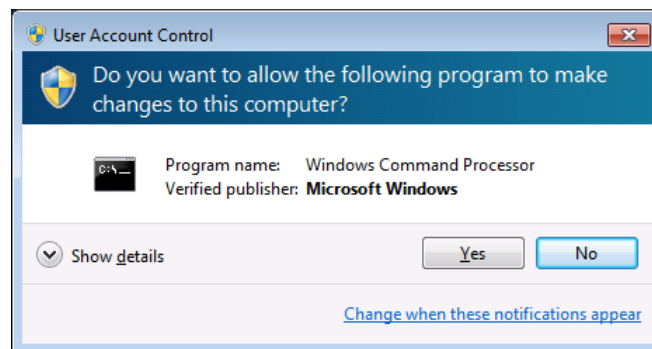
(2) Windows XP Mode installation

Perform the following procedures to install Windows XP Mode.

1. Log on as a computer administrator if not already logged on as such.
2. Open a command prompt to start the installation program.
 - Click the **[Start] button**, and then choose **[All Programs]**.
 - Click **[Accessories]**.
 - Right-click **[Command Prompt]**, and then choose **[Run as administrator]** from the displayed menu.

(If the logged-on administrator account is the built-in Administrator account, click **[Command Prompt]**.)

 - If the **[User Account Control] window** is displayed, click the **[Yes] button**.



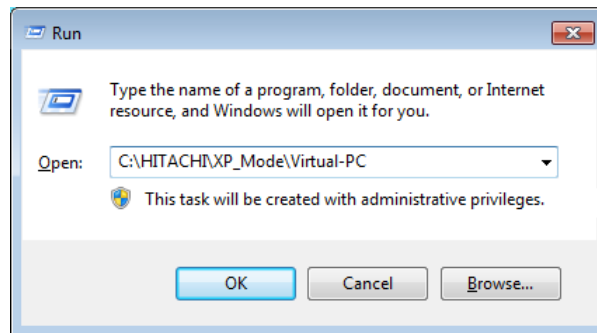
3. Enter the following in the **[Command Prompt] window**, and press the **[Enter] key**.
cd C:\HITACHI\XP_Mode
4. Enter the following in the **[Command Prompt] window**, and press the **[Enter] key**. Install is started.
WXPMMode_install.bat
5. Once installation is complete, the following message is displayed.
Installation completed.

This completes installation. Terminate the command prompt.

(3) Windows Virtual PC installation

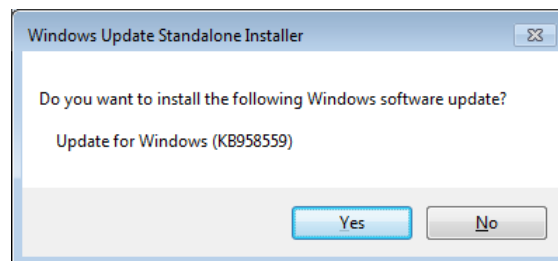
Perform the following procedures to install Windows Virtual PC.

1. Log on as a computer administrator if not already logged on as such.
2. Start the setup program.
 - Click the **[Start]** button, and then choose **[All Programs]**.
 - From **[Accessories]**, choose **[Run]**.
 - Enter the following for the “Open” field, and click the **[OK]** button.
C:\HITACHI\XP_Mode\Virtual-PC

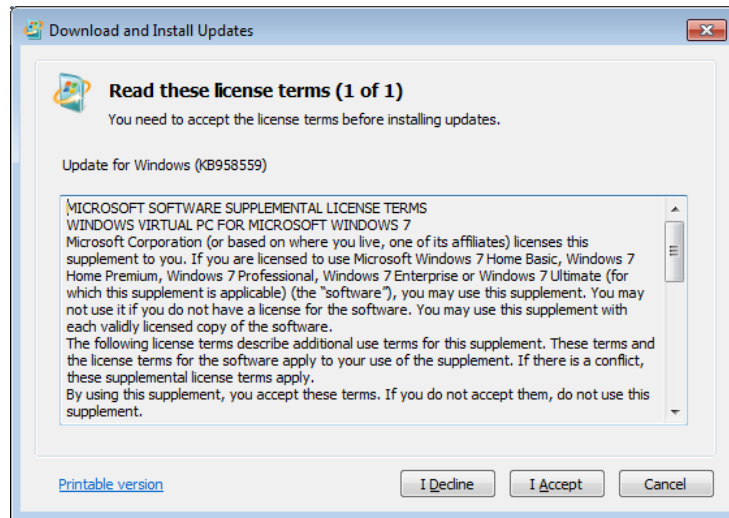


- The Explorer screen is displayed. Double-click the setup program inside. Note that the setup program differs depending on the number of bits for the operating system.
 - For 32-bit operating systems: Windows6.1-KB958559-x86.msu
 - For 64-bit operating systems: Windows6.1-KB958559-x64.msu

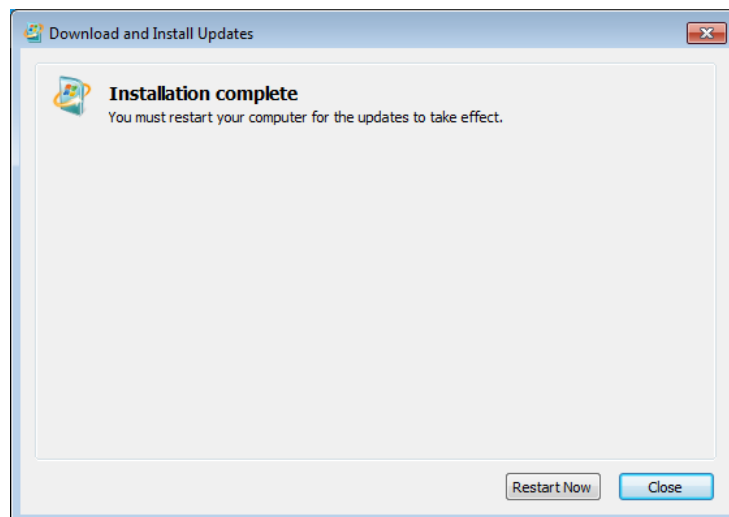
3. The **[Windows Update Standalone Installer]** window is displayed. Click the **[Yes]** button.



4. The **[Download and Install Updates] window** is displayed. Read the license terms carefully, and click the **[I Accept] button**.



5. Once installation is complete, a screen prompting restart is displayed. Click the **[Restart Now] button** to perform restart.



(4) Windows XP Mode setup preparations

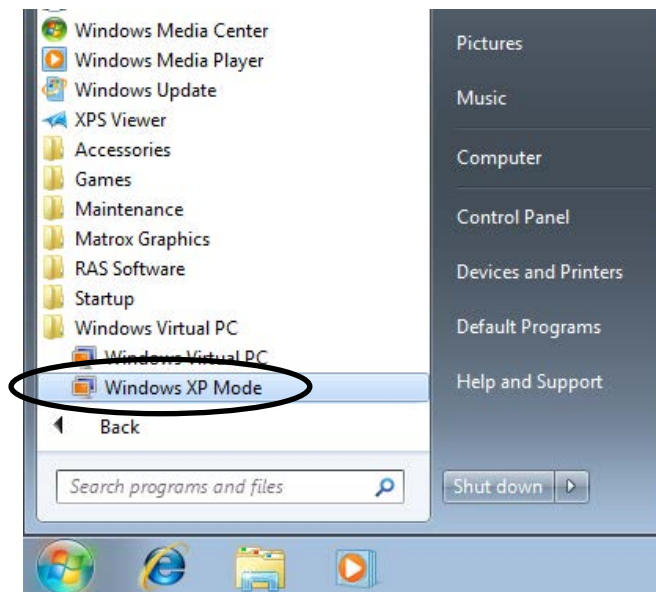
The following items are required for Windows XP Mode setup. Determine and check them before starting setup operations.

Item	Description
XPMUser password	XPMUser (computer administrator account) password. This can be changed after being set.

(5) Windows XP Mode setup

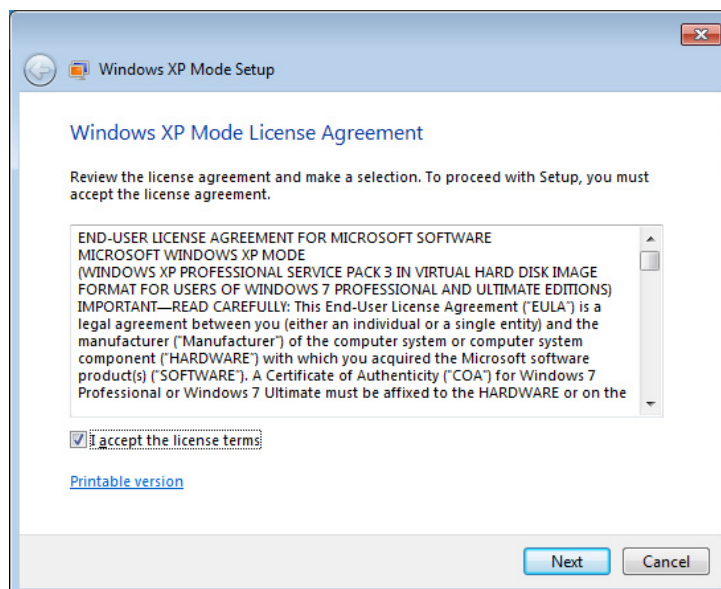
Perform the following procedures to set up Windows XP Mode.

1. Click the **[Start]** button, and then choose **[All Programs]**.
2. Choose **[Windows Virtual PC]**, and then **[Windows XP Mode]**.

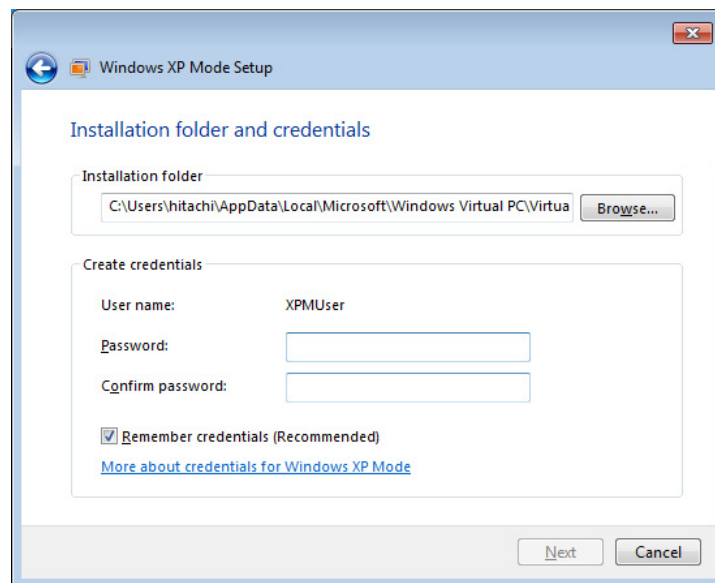


3. The end user license agreement for Windows XP Mode is displayed.

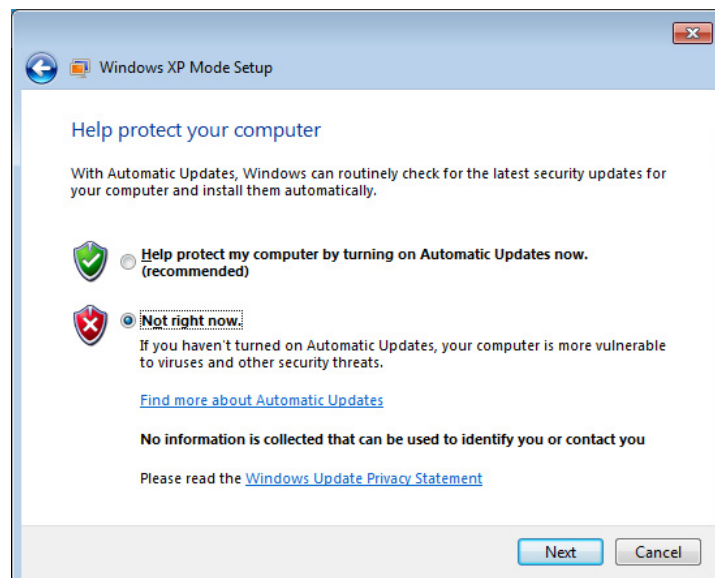
- Read the end user license agreement carefully, select the **“I accept the license terms”**, and click the **[Next]** button.



4. The Installation folder and credentials screen is displayed.
 - Enter the XPMUser password for **[Password]** field and **[Confirm password]** field.
 - Click the **[Next]** button.



5. The automatic update settings screen is displayed.
 - Select **“Not right now”**, and click the **[Next]** button.



6. The screen for setting up drive sharing is displayed.
 - Click the **[Start Setup]** button.



7. A screen is displayed indicating that Windows XP Mode is being set up.



Once setup is completed, the virtual machine starts, and the user is automatically logged in as the XPMUser.

NOTE

During initial startup after Windows XP Mode setup, the Windows XP Mode timezone may not match the Windows® 7 timezone. In this case, manually change the Windows XP Mode timezone to the Windows® 7 timezone so that they match.

(6) Windows XP Mode and Windows Virtual PC uninstallation

Perform the procedures shown in this section to uninstall and delete Windows XP Mode and Windows Virtual PC from a computer.

NOTE

Terminate any running application programs before performing uninstallation.

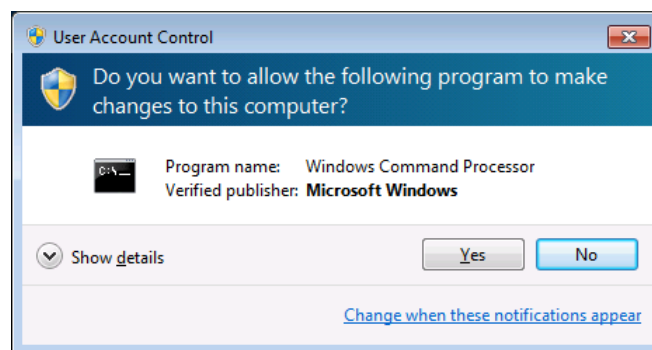
(a) Windows XP Mode uninstallation

Perform the following procedures to uninstall Windows XP Mode.

1. Log on as a computer administrator if not already logged on as such.
2. Open a command prompt to start the uninstallation program.
 - Click the **[Start]** button, and then choose **[All Programs]**.
 - Click **[Accessories]**.
 - Right-click **[Command Prompt]**, and choose **[Run as administrator]** from the displayed menu.

(If the logged-on administrator account is the built-in Administrator account, click **[Command Prompt]**.)

- If the **[User Account Control]** window is displayed, click the **[Yes]** button.



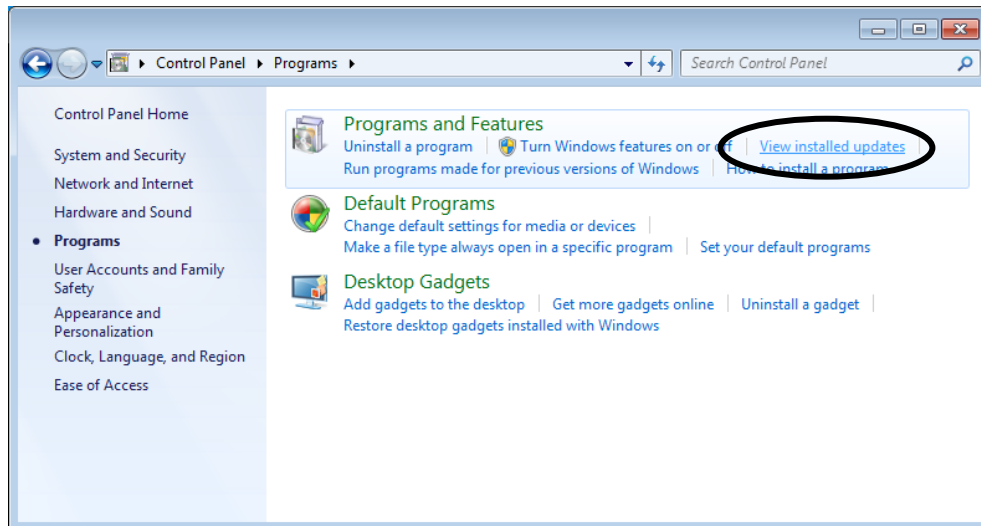
3. Enter the following in the **[Command Prompt]** window, and press the **[Enter]** key.
cd "C:\HITACHI\XP_Mode\Windows XP Mode"
 4. Enter the following in the **[Command Prompt]** window, and press the **[Enter]** key.
WXPMode_uninst.bat
 5. At the start of uninstallation, the "Do you want to uninstall Windows XP Mode? (y/n) :"
- message is displayed.
- To perform uninstallation, enter "y", and then press the **[Enter]** key.
- Otherwise, enter "n", and press the **[Enter]** key. Uninstallation processing is canceled.
6. When uninstallation is completed, the following message is displayed.
Uninstallation completed.

This completes Windows XP Mode uninstallation. After the command prompt terminates, uninstall Windows Virtual PC.

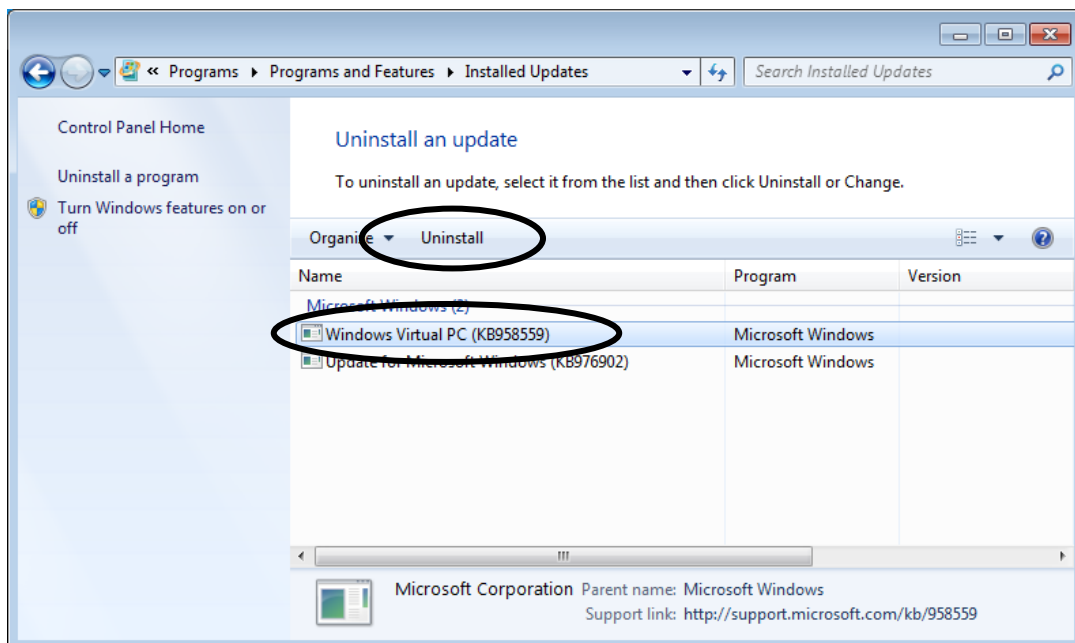
(b) Windows Virtual PC uninstallation

Perform the following procedures to uninstall Windows Virtual PC.

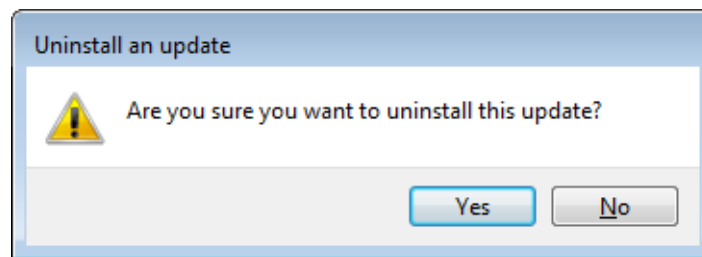
1. Log on as a computer administrator if not already logged on as such.
2. Click the **[Start] button**, and then choose **[Control Panel]**.
3. Click **[Programs]**.
4. In **[Programs and Features]**, click **[View installed updates]**.



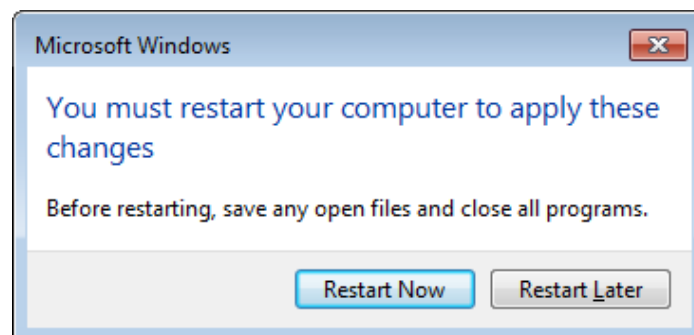
5. The **[Installed Updates] window** is displayed. From the list, choose “Windows Virtual PC (KB958559)”, and click **[Uninstall]**.



6. The **[Uninstall an update] window** is displayed. Click the **[Yes] button**.



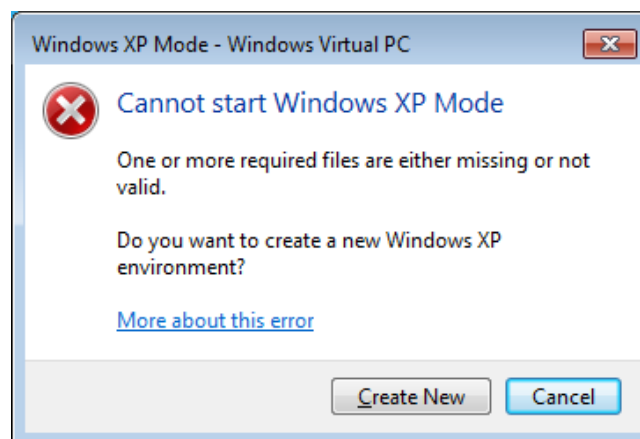
7. After uninstallation, a screen prompting restart is displayed. Click the **[Restart Now] button** to perform restart.



This completes Windows Virtual PC uninstallation.

NOTE

To install Windows XP Mode again, perform the steps from “(2) Windows XP Mode installation” to “(5) Windows XP Mode setup” in Appendix A again. Here, the following dialog box might be displayed for Windows XP Mode setup. In this case, click the **[Create New] button** to continue setup processing.



This Page Intentionally Left Blank